

# OUTLOOK

NEWS AND VIEWS FROM MORVAL  
AND WIDEGATES



October 2013

Please note that the opinions expressed within this publication are not those of the Parish Church,  
Editors or anyone other than the authors of the articles.

## Useful Contacts

Priest-in-Charge	Rev. Philip Sharp	263070
Readers	Rosie Woodcock	265482
	John Potter	264986
Church Wardens	Mike Willmott	240218
	Val Olver	240439
St. Wenna's Organist	Heather Taylor MA	264474
<i>Outlook</i> Editor	Meriel Kitson	240385
The Old Vicarage, Morval, Nr Looe, PL13 1PN		
meriel@outlookmorval.co.uk		
PCC Secretary and Parish Safeguarding Officer for Children		
& Vulnerable Adults	Maggie Willmott	240218
Bell Tower Captain	Robin Tamblyn	262772
County Councillor	Jim Candy <a href="mailto:jcandy@cornwall.gov.uk">jcandy@cornwall.gov.uk</a>	250376
Parish Council Chair	Clive Pearn	240359
Parish Clerk	Lynne Sutton	01579 326152
morvalparish@aol.com		
Morval Estate Office	John Kitson	241111
Widegates Reading Room	Yvonne Greenaway	240343
Nomansland Village Hall	Betty Powley	240650
Widegates Garden Club	Marie Bersey	240478
Morval Action Group	Tracy Chudleigh	240704
Trenode School & Toddlers		240235
Liskeard Community Hospital		01579 335600
NHS Direct (24 hour service)		111
Police (Non Urgent Calls)		101
Neighbourhood Team Leader: Sergeant Russ Hall		101
PCSO for Morval and Widegates: Steve Cocks		101
Dog Watch	Steve Cocks or 0300 1234 212	
Morval Parish website	<a href="http://www.morvalwidegates.weebly.com">www.morvalwidegates.weebly.com</a>	
Trenode School website	<a href="http://www.trenode.cornwall.sch.uk">www.trenode.cornwall.sch.uk</a>	

## Neighbourhood Watch

M Barber	240309	M Tamblyn	240267	M Wevell	240420
M Burt	240383	B Reynolds	240520	K Burt	240545

## ***EDITORIAL***

A very big thank you to Mary Howes, who, with Ray, has moved out of her home at Bindown after 40 years, into retirement accommodation in Looe. Mary was one of the original editors (along with Val Olver, Mike Perrett, and Mike & Maggie Willmott) of Outlook magazine in July 1991 and helped produce it for 18 years. Also all my thanks to the sponsors and distributors, and our printer Richard Kneebone without whose efforts there would be no Outlook. Please remember we now have a Parish web-site at [www.morvalwidegates.weebly.com](http://www.morvalwidegates.weebly.com)

## ***MORVAL NEWS & EVENTS***

A watch has been found in the Widegates area if anyone has lost one please phone the Editor (pluck up courage to leave message plus telephone number on answer phone) or e mail or write, contact details inside front cover.

### **PFA Research Ltd**

**09th September 2013**

**01326 375705**

**[robert.rush@pfa-research.com](mailto:robert.rush@pfa-research.com)**

### **Call to Action for Micro-Businesses in East Cornwall**

East Cornwall Local Action Group (ECLAG) want to make sure that all micro-businesses in East Cornwall, no matter how small, have access to local support, business networks and funding opportunities. Businesses are encouraged to visit the web site ([www.eastcornwallbusiness.co.uk](http://www.eastcornwallbusiness.co.uk)) to register for future updates on relevant news, events, support and funding for micro-businesses.

**NB The editor has no way of checking the intentions Of PFA Research Ltd.**

## ***WIDEGATES GARDEN CLUB***

Wednesday October 30<sup>th</sup> at the Hall/RR 7-30pm talk on Japanese Gardens

## ***PARISH NEWS***

Hello Everyone

Cornwall Council will be posting out electoral registration forms on the 1st October. As the list of voters as a response to this will be used as the basis for the European Parliamentary Elections due in May 2014, it is important to return your form so that you are able to vote.

The council is now in possession of the draft lease for the asset transfer of Widegates "Village Green" and will be considering its contents at its meeting on October the 2nd.

Councillor Chudleigh, with the support of Cornwall Councillor Candy, continues to negotiate with Cormac representatives in an effort to resolve some highways concerns in various parts of the parish.

Issues surrounding Western Greyhound buses using Widegates Lane recently instead of the actual bus route should now have been resolved.

The parish council will be agreeing its budget for the new financial year at its meeting in November and as part of the process will be considering any applications received for grants. Please do submit your application if you are a community organisation with a project that will bring improvements for the parish or the people that live within it. If you require an application form and details of the procedure please contact me.

***Lynne Sutton . Clerk to Morval Parish Council"***

## ***WIDEGATES NEWS & EVENTS***

October 11th	Quiz Night	7-30pm	Bring a team of four or come along to make up a team. £4 per team.
--------------	------------	--------	---

October 25th	Bingo Evening	7-30pm
--------------	---------------	--------

November 9th	Coffee Morning	10-am	Proceeds for Xmas Party.
--------------	----------------	-------	--------------------------

November 29th	Xmas Bingo	7-30pm.
---------------	------------	---------

December 7th	Xmas Party	12.noon.
--------------	------------	----------

December 7th Saturday at 6pm Carol Singing & Switching on the Xmas Tree Lights. Some of us are secretly planning to dress up as Kings shepherds etc for fun.

***CELTIC HARVEST FESTIVAL***  
***AT ST WENNA'S CHURCH, MORVAL,***  
***18<sup>TH</sup> - 21<sup>ST</sup> OCTOBER***

Please support this new weekend event at our parish church. We would love to hear from any performers in the area who would like to take part in the Youth Concert at 6.30pm on Friday 18<sup>th</sup> October, or the slightly more formal concert at 7pm on Saturday 19<sup>th</sup>. The church will be decorated with a variety of displays both on a Celtic theme and celebrating the history of our church and community, and will be open, with refreshments available, throughout the weekend. Our informal Harvest Communion service will be at 11am on Sunday 20<sup>th</sup>, and the Harvest Festival service led by Trenode School will start in church at 6.30pm on Monday 21<sup>st</sup>, followed by supper and auction of produce.

Contact details: Heather Taylor – 01503 264474, Maggie Willmott – 01503 240218

***WALK CORNWALL 2***

Members of the Walk Cornwall team will be in Morval and Widegates from the afternoon of Tuesday 8<sup>th</sup> October until the morning of Thursday 10<sup>th</sup>, and are planning to make some house calls during that time. They will be wearing distinctive Walk Cornwall sweatshirts (with the boot logo) and will simply want to talk about their Christian mission. They won't have time to visit everyone in our area, so please get in touch with Val Olver on 240439 or Maggie Willmott on 240218 if you would particularly like a visit.

The walkers will be at Widegates Village Hall overnight, and would be very pleased to meet local residents over an informal meal starting at 7pm on the Wednesday evening. Please ring Val or Maggie if you would like to join them; the meal will be provided free of charge by church members.

## *POEM OF THE MONTH*

### *INVOCATION OF ST. WENNA*

I sought the land of Cornubia.  
Powerful the plentiful sea,  
Plentiful the enthralling tors,  
Enthralling the abundant woods,  
Abundant the profusion of rivers,  
Profuse the well-spring of tarns,  
Well-sprung the surge of valleys,  
Surging the citizens of congregations,  
Congregation of Dumnonia's chieftains,  
Dumnonia, land of tribes,  
Tribes of Corineus's people,  
Corineus's men and armies,  
Armies of mighty Cornubia,  
Cornubia, mighty and rich.  
A subtle incantation,  
Subtly woven at Merlin's hands,  
Merlin, born from beyond the ninth wave;  
Great Lady Cornubia:  
Saxon men harried her,  
Arthur fought for her.  
I found the land of Cornwall.

*Heather Taylor*

### *CHURCHES TOGETHER (LOOE & DISTRICT - MORVAL)*

On September 1st a Lammas tide Churches Together service was held at St. Wenna's, led by Reverends Philip Sharp and Andrew Hill. As Lammas celebrates the first loaf of the year, Philip baked a loaf of bread and Rosie Woodcock (Morval Reader) presented it. Robin Henwood (Unitarian) & Elisabeth Hall (Roman Catholic) read the lessons, and Maggie Willmott (Anglican) read a prayer about the Bread of Life. The Liskeard Lady Singers sang, led by Brenda Gilbert and accompanied by Heather Taylor

### ***Churches Together continued.....***

(also organist @ St. Wenna's). It was a real privilege to have the opportunity to worship alongside people from various Christian denominations.

During the service a group leader of Walk Cornwall 2 spoke about this forthcoming event around Looe (5th-13th October). They will be doing a walkabout in Widegates and Morval from Tuesday 8<sup>th</sup> to Thursday 10<sup>th</sup>, and also visiting Trenode School,

It is with great sadness to learn that Sclerder Abbey (a 'Churches Together' member) is to close, and the Sisters have been told they will be leaving in 2 - 3 months.

Finally, please continue to support CORNERSTONE the charity shop in West Looe. This is the outreach part of CHURCHES TOGETHER and supports local charities. Please pop in for a coffee & a chat Mon-Sat. 10am-4pm. Cornerstone is always on the look out for volunteers.

### ***MESSY CHURCH***

Messy Church returned after the Summer hols on 27<sup>th</sup> September and a great time was had by all making autumn garlands and scarecrows! We talked about Harvest and all the wonderful gifts from God.

The next Messy Church session is on October 25<sup>th</sup> 3.30-5pm at the school – please feel free to come along and join in some fun, creation and celebration! We will be learning all about Joseph and the children will be making their own rainbow coloured dream coats, dream pictures and thumbprint people. For further info please contact Helen Priestley. Tel: 241188, email: [hpriestley.78@btinternet.com](mailto:hpriestley.78@btinternet.com)

### ***NOMANSLAND NEWS AND EVENTS***

Saturday **October 26<sup>th</sup>** Bumper Jumble Sale opens at 2-30pm. Cream teas, Raffle. All proceeds will go to Little Harbour, Cornwall's children's Hospice.

Sunday **November 10<sup>th</sup>** Remembrance service at 6-30pm followed by supper.

Saturday **December 7<sup>th</sup>** Christmas Fayre at 2-30. Teas Various stalls, and Father Christmas.

Friday the **20<sup>th</sup> December** Christmas Bingo, doors open 7pm, eyes down 8pm.

Saturday **21<sup>st</sup> December** Carol service at 6-30 pm followed by mince pies.

## ***CHANCEL REPAIR LIABILITY***

This is something that Morval Parochial Church Council is having to investigate at the moment, as a result of government legislation. This has been a painstaking and difficult process, and we are still taking advice on how to proceed. The following paragraph will hopefully outline the situation so far.

The chancel is the front section of a church building, containing the choir stalls and altar. Originally, for churches such as ours, the local rector owned land in the parish, and was responsible for repairing the chancel of the church out of the money the land produced. Monasteries often acquired this land together with the responsibility for paying for the repair of the chancel.

When Henry VIII sold the monasteries' land, the liability to pay for the repair of the chancel remained with the land sold, and this is still the case today. The original liabilities still apply, without any increase, to parts of our parish, and nothing new has been added. This might sound alarming, but the liability only applies to repairs to that particular part of the church building.

The improvements that we are currently planning apply to a different part of the building, and have no connection with Chancel Repair Liability. It is certainly not the intention of Morval PCC to land anyone with a bill, in fact we would far rather not have been put in this position, but we must follow the correct procedures in order to carry out our statutory duties with regard to the church building. If we were ever to need major repairs to the chancel, we are committed to keeping the cost as low as possible.

Each historical plot of land, or tithe field, has a percentage of the repair liability associated with it, so, where several properties have been built on a single plot, the owner of each property is liable for a share of the allocated amount. In practise, most of these liabilities, if enforced, would translate into very small amounts of money, though larger areas would carry a greater liability. If the PCC finds that it has no option but to register the liable plots with the Land Registry, the owners of those plots will be contacted.



## ***CHURCH SERVICES***

ALL start at 11am unless otherwise stated.

### ***OCTOBER 2013***

<b>Date</b>	<b>6th October</b>
Service	Eucharist
Reader	B. Young
Sidesperson	V. Olver
Flowers	Ann Willams
<b>Date</b>	<b>13th October</b>
Service	Family Service
Reader	H. Priestley
Sidesperson	A. Rice
Flowers	Ann Williams
<b>Date</b>	<b>20th October</b>
Service	Eucharist
Reader	C Burgoyne
Sidesperson	B MacArthur
Flowers	Meriel Kitson
<b>Date</b>	<b>27th October</b>
Service	Morning Prayer
Reader	M. Kitson
Sidesperson	A. Williams
Flowers	Tracy Chudleigh

### ***NOVEMBER 2013***

<b>Date</b>	<b>3rd November</b>
Service	Eucharist
Reader	V. Olver
Sideperson	C. Burgoyne
Flowers	J. Gill
<b>Date</b>	<b>10th November</b>
Service	Remembrance Day
Reader	
Sideperson	A. Rice
Flowers	J. Gill
<b>Date</b>	<b>17th November</b>
Service	Eucharist
Reader	B. MacArthur
Sideperson	V. Olver
Flowers	V. Pearce
<b>Date</b>	<b>24th November</b>
Service	Morning Prayer
Reader	M. Kitson
Sideperson	A. Williams
Flowers	V. Pearce

Please note that the list with the Bible readings on it will be given to the above people individually and will also be pinned up in the Porch of the church. Thank you for reading and being sidesperson. If you need to change your date or have any queries, please contact Val Olver: 01503-240439. Any problems with flower rota contact Sue Aunger 01503 241 063.

## ***TRENODE C OF E VA SCHOOL***

The autumn term is always full of excitement as we start a new school year. This year we have welcomed fourteen new pupils in the Foundation Stage along with two other pupils elsewhere in the school and two others on their way. We hope that they will all be very happy and we look forward to working with them and their families.

The school garden has provided a bountiful supply of fruit and vegetables. The youngest pupils enjoyed making (and eating) Gruffalo crumble with raspberries and apples! Our key hole garden was especially successful and the children are delighted.

Harvest Festival will be at St Wenna's on Monday 21<sup>st</sup> October at 6.00pm where we will be able to give thanks for another abundant harvest. Please come and support us if you are able to. The theme will be a Cornish Harvest.

### **Does your child need extra help?**



**Maths and English tuition for**

**KS1 to GCSE.**

**FREE ASSESSMENT**

**Give your child a brighter  
future.**

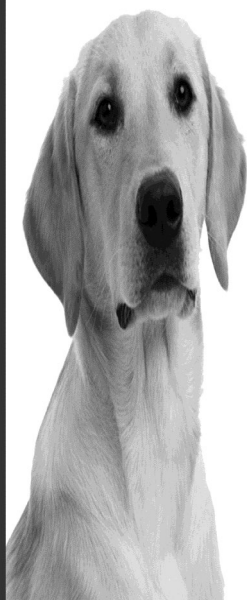
**[www.cgtnuion.com](http://www.cgtnuion.com)**

**BFM House, The Parade, Liskeard 01579 340400**

# The **Pet Shop**

## Liskeard

**01579 347144**



**Home  
Delivery  
Service Available**

**[www.thepetshopliskeard.co.uk](http://www.thepetshopliskeard.co.uk)**

**The Pet Shop, Windsor Place, Liskeard, PL14 4BH**



# Pine Lodge

HOME CARE



We provide a wide range of home care services.  
Whilst giving assistance with all aspects of  
personal care we are committed to achieving  
and maintaining independence.

Telephone: **01503 272016**

Email: **homecare@orchardcare.co.uk**

Website: **www.orchardcare.co.uk**

Pine Lodge Home Care, Restgarth Care Home,  
Langreck Lane, Polperro, Looe, Cornwall PL13 2PW



STOVE SHOP

ren@wables

STOVES - RENEWABLES - HEATING

TEL 01579 345018

7 PIKE ST, LISKEARD, PL14 3JE

WWW.STOVESHOP.CO.UK

**AT&I** (South West)

**Portable Appliance Testing & Inspection**

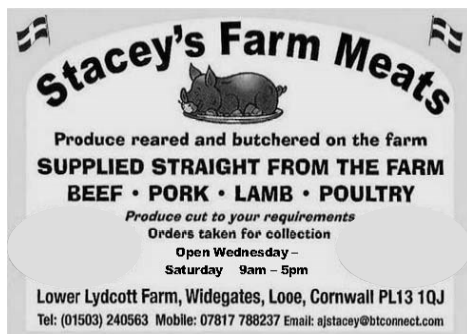
Commercial • Industrial • Residential Homes  
Hotels • Guest Houses • B & B • Leisure  
Caravan Equipment

**01752 851470**

C & G Qualified Technicians  
Testing & Inspections comply with the  
IEE Codes of Practice  
[www.atisouthwest.co.uk](http://www.atisouthwest.co.uk)



**K9 STYLE**  
PET GROOMING  
Jessica Tamblyn-Hayward  
Qualified Pet Groomer  
Bray Farm  
Bindown  
Nomansland, Near Looe  
01503 240841 or  
07834473835



**Stacey's Farm Meats**  
Produce reared and butchered on the farm  
**SUPPLIED STRAIGHT FROM THE FARM**  
**BEEF • PORK • LAMB • POULTRY**  
Produce cut to your requirements  
Orders taken for collection  
Open Wednesday –  
Saturday 9am – 5pm  
Lower Lydcott Farm, Widegates, Looe, Cornwall PL13 1QJ  
Tel: (01503) 240563 Mobile: 07817 788237 Email: [ajstacey@btconnect.com](mailto:ajstacey@btconnect.com)

## PIANO TUITION

**Beginners to Grade 8**  
**also, Music Theory**  
**Half hour lessons £ 10**  
**Hour lessons £ 20**

**HEATHER TAYLOR MA**

**01503 264474**

[hstaylorofcraigmore@hotmail.com](mailto:hstaylorofcraigmore@hotmail.com)



**Metherell Gard**  
Chartered Accountants and Registered Auditors

With over 80 years experience Metherell Gard offer confidential and up to date Accountancy and Taxation services specialising in small to medium-sized businesses and individuals. Whether you are a Sole Trader, Partnership, Limited Company, Club or Association we are client focussed and our range of services covers all aspects of accountancy from Business Start Up advice through to Tax Planning.

We pride ourselves in being reliable and approachable. As one of our valued clients, we will provide you with total commitment offering guidance and support to accompany our comprehensive range of services.

Metherell Gard, Morval, Looe, Cornwall, PL13 1PN

t:01503 240940 f: 01503 240950

e: [enquiries@metherellgard.co.uk](mailto:enquiries@metherellgard.co.uk)

## W. B. Harding & Sons

*Scrap Metal Merchants*

*Vehicle Dismantlers*

*Car Collection Service*

Trebrownbridge, Horningtops,  
Liskeard, Cornwall  
PL14 3PX

**01503 240271**



**David Ellis BVSc. MRCVS**  
**Veterinary Surgeon**

**4c. Heathlands Road**  
**Liskeard**  
**PL14 4DH**

**Phone 01579 342 602**  
**Fax 01579 349568**

Email: [davidellis@pensipille.freemove.co.uk](mailto:davidellis@pensipille.freemove.co.uk)

**Surgery Hours:-**

**Mon-Fri**  
**9.00 - 10.00am &**  
**5.00 - 6.00pm**  
**Sat**  
**9.00 - 10.00am**

## MIKE KENSHOLE ELECTRICAL

**01503 240675 / 07778**

**524592**

12 MORVIEW ROAD, WIDEGATES, LOOE, CORNWALL.

PL13 1QE

CONTACT ME VIA PHONE OR 01503 240 675 OR 07778

524 592 : [MIKE@KENSHOLEELECTRIC.CO.UK](mailto:MIKE@KENSHOLEELECTRIC.CO.UK)

[WWW.KENSHOLEELECTRIC.CO.UK](http://WWW.KENSHOLEELECTRIC.CO.UK)

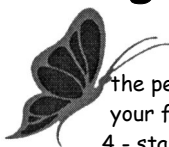
All types of Domestic & Commercial Work

Additional sockets & Lighting

Testing & Inspection

Camping & Caravan Parks

## Wringworthy Cottages



the perfect choice for when  
your family and friends visit  
4 - star cottages, open all year

[www.wringworthy.co.uk](http://www.wringworthy.co.uk) email: [holidays@wringworthy.co.uk](mailto:holidays@wringworthy.co.uk)

Wringworthy Cottages, Morval, Looe, Cornwall, PL13 1PR

tel. 01503 240685 fax. 01503 240830

resident owners: MICHAEL & KIM SPENCER



**R.S.D. INSTALLATIONS**  
**Electrical & Computer Networking**

**Free Estimates**  
**NIC & EIC Approved**

**Rob Smith**  
proprietor

**Tel / Fax: 01503 240279**

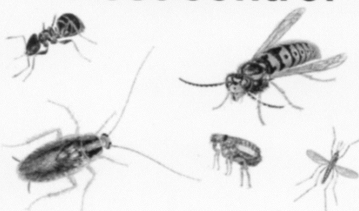
**Mobile: 07979 696119**

**Rovena - Shortacross - Widgates**  
**Looe - PL13 1QJ**



[www.pestkilsouthwest.co.uk](http://www.pestkilsouthwest.co.uk)

**Pest control**



**PROFESSIONAL CONTROL**  
**OF PESTS - No call out fee**

**07896595110**

**01579320915**

BOLVENTOR LAUNCESTON CORNWALL



## ***DOWN-ENDE HOUSE***

Exclusive Dining Venue – AA Four Star B&B Accommodation

We are delighted to specialize in smaller functions catering for a range of events including:

- Family celebrations
- Birthdays and Wakes
- Working lunches
- Anniversaries, Christenings
- Business breakfast meetings
- Bookings for Christmas now being taken

Special diet catered for \* Wheelchair accessible \* Car park with off road parking

Our conservatory dining room extends our present dining room and can be used for private dining for parties. We will be delighted to handle all arrangements, compose menus and suggest wines to make your occasion special.

- Each event tailored to your needs personally organized
- Excellent local produce prepared in house
- With an emphasis on friendly service and superb value for money

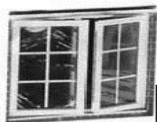
Widegates, Nr Looe, Cornwall, PL13 1QN – Tel 01503 240 213  
[www.downende.com](http://www.downende.com)



# **SOLARTEC**

## **Windows & Conservatories Ltd**

**'A' Rated WINDOWS & DOORS  
at BEST PRICES EVER!**



FENSA  
REGISTERED

Professionally fitted and finished by us with a  
**10 year ins. guarantee.**  
In all colours

**NEW**

### **FACTORY SHOP SUPPLY ONLY**

For all your windows, doors, conservatories,  
fascia, trims, guttering and sealants  
**7-10 DAY TURN AROUND ON WINDOWS,  
DOORS and CONSERVATORIES**

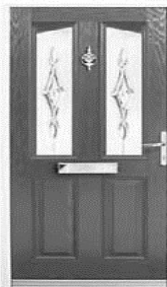
**TEL: 01579 343425**

**FAX: 01579 344500**

WEBSITE: [www.solartecwindows.co.uk](http://www.solartecwindows.co.uk)

EMAIL: [sales@solartecwindows.co.uk](mailto:sales@solartecwindows.co.uk)

**KEEPING JOBS IN CORNWALL**





## **Moore Electrical**

*Electrical Contractors*

- Domestic Installations
- Commercial and Agricultural
- Industrial
- Repairs and Rewires
- Portable Appliance Testing
- Periodic Inspection and Testing
- Fire Alarms and Emergency Lighting
- All work guaranteed and certificated
- Serving the Community since 1990

Tel. 01503 240298

Mobile: 07881 940068

Menhay, Morval, Looe  
Cornwall PL13 1PR



## **BINDOWN STORES** AND **POST OFFICE**

NO MAN'S LAND, NR. LOOE

**FULLY STOCKED WITH ALL YOUR GROCERY  
REQUIREMENTS AT SENSIBLE PRICES**

INCLUDING

**BEERS, WINES AND SPIRITS**

ALSO

**COAL & LOGS**

OPENING HOURS

**MONDAY TO SATURDAY 7.00am to 6.00pm**  
**SUNDAY 8.00am to 2.00pm**

*We Look Forward To Seeing You Soon*

**ELAINE & MARTIN**

**TEL: 01503 240840**