

# OUTLOOK

NEWS AND VIEWS FROM MORVAL  
AND WIDEGATES



May 2014

Please note that the opinions expressed within this publication are not those of the Parish Church,  
Editors or anyone other than the authors of the articles.

## Useful Contacts

Priest-in-Charge	Rev. Philip Sharp	263070
Readers	Rosie Woodcock	265482
	John Potter	264986
Church Wardens	Mike Willmott	240218
	Val Olver	240439
St. Wenna's Organist	Heather Taylor MA	264474
Outlook Editor	Meriel Kitson	240385
The Old Vicarage, Morval, Nr Looe, PL13 1PN		
meriel@outlookmorval.co.uk		
PCC Secretary and Parish Safeguarding Officer for Children		
&Vulnerable Adults	Maggie Willmott	240218
Bell Tower Captain	Robin Tamblyn	262772
County Councillor	Jim Candy	250376
Parish Council Chair	Clive Pearn <a href="mailto:jcandy@cornwall.gov.uk">jcandy@cornwall.gov.uk</a>	240359
Parish Clerk	Lynne Sutton	01579 326152
morvalparish@aol.com		
Morval Estate Office	John Kitson	241111
Widegates Hall }	Caroline Pengelly	
Reading Room }	<a href="mailto:carolinejpengelly@sky.com">carolinejpengelly@sky.com</a>	240952
Nomansland Village Hall	Betty Powley	240650
Widegates Garden Club	Marie Bersey	240478
Morval Action Group	Tracy Chudleigh	240704
Trenode School & Toddlers		240235
Liskeard Community Hospital		01579 335600
NHS Direct (24 hour service)		111
Police (Non Urgent Calls)		101
Neighbourhood Team Leader: Sergeant Mick Howe		101
PCSO for Morval and Widegates: Steve Cocks		101
Dog Watch	Steve Cocks or 0300 1234 212	
Morval Parish website	<a href="http://www.morvalwidegates.weebly.com">www.morvalwidegates.weebly.com</a>	
Trenode School website	<a href="http://www.trenode.cornwall.sch.uk">www.trenode.cornwall.sch.uk</a>	
Viridor (report smells that may be associated with the landfill site)	01579 343006	

## Neighbourhood Watch

M Barber	240309	M Tamblyn	240267	M Wevell	240420
M Burt	240383	B Reynolds	240520	K Burt	240545

## ***EDITORIAL***

On behalf of Outlook Meriel Kitson would like to thank Morval Parish Council for their generous grant. With the continuing support of the Advertisers/sponsors Outlook should remain solvent for another financial year.

## ***WIDEGATES NEWS & EVENTS***

### **WIDEGATES READING ROOM & VILLAGE HALL**

#### **May**

- |                            |                                      |
|----------------------------|--------------------------------------|
| Saturday 3rd               | - Garden Club Plant sale 10am-12noon |
| Saturday 24th              | - Coffee Morning 10am                |
| Wednesday 28 <sup>th</sup> | - Garden Club meeting 7.30pm         |
| Friday 30th                | - Bingo, Eyes Down 7.30pm            |
| Every Thursday             | - Flower Arranging 7.30pm            |

**E.U. ELECTION** Thursday 22<sup>nd</sup> of May Hall/RR open 7am to 10pm for you to vote.

## ***WIDEGATES GARDEN CLUB***

The May Bank Holiday weekend Flower Festival has been CANCELLED. Instead the Flower Arranging Group invites everyone to Widegates Hall/RR on Tuesday 11.11.11 to a Floral Memorial to commemorate those who suffered and died in World War 1.

## ***MESSY CHURCH***

The next Messy Church is on May 23rd at the usual time of 3.30-5pm in the school hall. This month the children are going to be decorating a cross to commemorate Bishop Tim visiting the school in June. Messy Church is open to everyone in the community and their families and is free so please come along and have some fun. For further info please contact Helen Priestley Tel 01503 241188 email [hpriestley.78@btinternet.com](mailto:hpriestley.78@btinternet.com)

## ***PARISH NEWS***

Hello Everybody

The Annual Parish meeting, held on the 2nd April immediately before the council meeting, was well attended by people of the parish. Hopefully, it gave people an opportunity to meet the parish councillors and to hear about organisations within the parish that may be of interest.

For those unable to attend, Councillor Pearn gave his annual report as Chair of the council as follows:

"I would like to thank all my fellow councillors for their support throughout the year and particularly Councillor Spencer who acted as Vice-Chair and Councillor Kitson who took on the portfolio holder role for planning whilst Councillor Hunt was on a sabbatical for four months in New Zealand. The expertise of the portfolio holders and their willingness on various occasions to take time to attend meetings with representatives of Cornwall Council, Trenode School, the Diocesan Board, Cormac and other commercial bodies has proved of great assistance in helping resolve some of the problems within the parish. Some of the meetings have been held in neighbouring parishes and towns and are in regards to flooding and traffic problems which have again been prominent. I hope that parishioners and those who work in the area appreciate what has been achieved.

Councillor Hunt and I went and signed the contract for the lease of the "Village Green" in late October. Fees for the solicitor and the transfer cost were paid but there currently appears to be a "fly in the ointment" as Cormac had an interest in the land. The solicitor has written on numerous occasions and as requested at the last meeting, the clerk also wrote a letter to Cornwall Council but, as yet there has been no response.

To date, there has been no further planning application from Hastoe's for further development of the land at Shortacross as detailed during their public consultation held in April 2013.

Councillor Hutchins, the portfolio holder for education, Councillor Hunt and myself attended an informal meeting last week with representatives of Trenode School, the Diocesan Board, residents and Cornwall Councillor Candy to look at ways of bringing a positive closure to Trenode Lane. Frank objectives were aired and there was input from all present at the meeting. It appears that there is a way forward and hopefully at some future point it will be resolved.

Finally, I would like to thank the following people:

Doctor Meriel Kitson and her team for editing, publishing and delivering the Outlook magazine.

Mike Willmott for his efforts and time spent creating and maintaining a parish web site.

Councillors Spencer and Kitson for heading up the Neighbourhood Plan Group and all of those people who have offered their assistance with this piece of work.

PCSO Steve Cocks for his attendance at the parish council meetings and his vigilance within the parish.

Cornwall Councillor Jim Candy for his attendance at our monthly meetings and the various other external meetings that he has attended which have been necessary for resolving issues surrounding the environment and the roads within the parish.

The parish clerk for her patience and perseverance in dealing with internal and external matters, many of which are repetitive."

***Lynne Sutton***

Clerk to Morval Parish Council

## ***TRENODE C OF E VA SCHOOL***

The Spring Term was a busy one with lots of exciting activities as usual. Our thanks to the PTFA for providing an Easter Disco and Easter Eggs for all of the children. We were also delighted with our success at the Cornwall Spring Flower Show at Boconnoc where we won two first and one second place in the Junior Gardening Classes.

In the coming term we look forward to better weather and our summer activities. All of the children will be continuing to develop their swimming skills and the cricket sessions start again. Then of course nearer to the end of term we will hold our Sports Day. The older children will also have the opportunity to go on a residential to Delaware.

We are also looking forward to a term of art and creativity with our collaboration with the Story Republic team and other local schools.

The Flower Show and Summer Fair will be held on Friday 4<sup>th</sup> July in the afternoon. All welcome! Please look out for the schedule of events.

To find out more about what is happening at school go online and find us at: [www.trenode.cornwall.sch.uk](http://www.trenode.cornwall.sch.uk).

***Mrs Lindsay.*** Headteacher

## ***REGARDING THE PARISH PLAN – WHERE IS IT?***

Val Olver writes:

‘I have now been to two meetings at which promises were made that the Parish Plan would have input from parishioners rather than just the Parish Councillors. The first one was some time ago at Duloe Village Hall, organised by CC Jim Candy, requesting the help and involvement of as many parishioners as possible. That seems to have come to nothing, in fact the one meeting that was arranged, which a number of parishioners were keen to attend, was cancelled at the last minute.

At the Annual Parish Meeting in Widegates Reading Room at the start of April, we were promised a meeting to get things organised in the near future. To date we have heard nothing. I was led to understand there was a time limit to organise the Parish Plan. There are parishioners who have shown interest but that interest seems to be waning because of lack of action.

At the Annual Parish Meeting, parishioners were invited to submit their thoughts on the Parish Plan to Councillors Kitson and Spencer. It is therefore up to every one of us who wishes to have our ideas included to respond to that invitation, as the Parish Plan is not a Parish Council project, but a representation of the views of the community’.

The logo for Stove Shop Renewables features the words "STOVE SHOP" in a bold, sans-serif font above the word "renewables" in a lowercase, sans-serif font. A stylized circular arrow graphic is positioned between the two words, with the arrow pointing upwards and to the right. The entire logo is enclosed within a thin black rectangular border.

**STOVES - RENEWABLES - HEATING**  
**TEL 01579 345018**  
**7 PIKE ST, LISKEARD, PL14 3JE**  
**WWW.STOVESHOP.CO.UK**

## ***CHURCH SERVICES***

ALL start at 11am unless otherwise stated.

<b>Date</b>	<b>4th May</b>
Service	Eucharist
Reader	Mary Howes
Sidesperson	Ann Williams

<b>Date</b>	<b>1st June</b>
Service	Eucharist
Reader	Val Olver
Sidesperson	Bridget MacArthur

<b>Date</b>	<b>11th May</b>
Service	Family Service
Reader	Brian Young
Sidesperson	Val Olver

<b>Date</b>	<b>8th June</b>
Service	Family Service
Reader	Helen Priestley
Sidesperson	Carolynne Burgoyne

<b>Date</b>	<b>18th May</b>
Service	Eucharist
Reader	Bridget MacArthur
Sidesperson	Val Olver

<b>Date</b>	<b>15th June</b>
Service	Eucharist
Reader	Brian Young
Sidesperson	Anne Rice

<b>Date</b>	<b>25th May</b>
Service	Morning Prayer
Reader	Maggie Willmott
Sidesperson	Mike Willmott

<b>Date</b>	<b>22nd June</b>
Service	Morning Prayer
Reader	Bridget MacArthur
Sidesperson	Mike Willmott

<b>Date</b>	<b>29th June</b>
Service	Joint Benefice
(10.30am)	Eucharist at
	St. Martin's Hall

Please note that the list with the Bible readings on it will be given to the above people individually and will also be pinned up in the Porch of the church. Thank you for reading and being sidesperson. If you need to change your date or have any queries, please contact Val Olver: 01503-240439. Any problems with flower rota contact Sue Aunger 01503 241 063.

We have an enthusiastic team for brass and church cleaning at St Wenna. Any one wishing to join us we will be there 2nd Tuesday in the month at 10-00am. Refreshments provided. Contact Val Olver 01503 240439

# ***THE MORVAL PARISH WEBSITE***

[www.morvalwidegates.weebly.com](http://www.morvalwidegates.weebly.com)

The idea of the Morval Parish website is to provide information for residents and visitors about what is happening in the parish. It tries to provide the most up-to-date information about traffic alerts and other urgent messages in the area. Furthermore, there are links to Google, Yahoo and BT.com from all the key webpages.

A website is of little use if people can't find it. Care has been taken to try to ensure it can be easily found by web search engines. For example, if you search for 'morval widegates' on Google, it appears top of Page 1 for both websites and images.

**Homepage:** includes an interactive weather forecast for Widegates, providing a detailed forecast for the next 3 days, and a long term forecast for the next fortnight. It also highlights recent additions to the site

**Urgent announcements:** If you urgently need an announcement, just contact the website with the request.

**Traffic alerts:** This page will display traffic information in two categories

- details of current or future scheduled works to the roads (as announced by Cornwall Council or by utilities such as South West Water or British Gas), covering not only the roads in the parish, but also roads in the surrounding areas
- details of accidents, dangerous road conditions or similar hazards, which parishioners may have contacted the website with the request to us to urgently inform people about.

**Parish Institutions:** Such as Morval church and Messy church. If your organisation wants to be included, contact the website

**Morval Parish Council:** Information pages about the activities of Morval Parish Council, including

- Contact details for all the Morval Parish Councillors
- Registers of Interests for Morval Parish Council
- Details of the Parish Council meetings for the rest of the year
- Agenda and minutes for forthcoming Parish Council meetings
- Archive of Agendae and minutes for previous meetings
- Relevant notices
- Archive of previous relevant notices

**Jobs:** A listing of jobs that the website has been asked to display.

**Local businesses:**

Local businesses who have asked for a presence on or via the Parish website.

Message to local businesses:

- If your business has a website already, we can link our site to yours, in return



for a link from your site to ours.

- If you'd like a web presence, but don't know if it's worth the time, effort and cost of setting up and maintaining your own website, we have an innovation to offer. In return for a donation, we can set up a webpage on our website for you, and if, in the fullness of time, you decide to set up your own website, then the link to your page on our website can be replaced by a link to your own website.

**Local Information:** Information pages, such as

- Local bus and train timetables
- Finding the date of the next rubbish or recycling collection in your area
- Link to Trenode School
- Link to Widegates Reading Room & Village Hall
- Link to Nomansland Village Hall
- Link to Outlook magazine page (including an archive of previous magazines)

**Posters:** Copies of the posters about community and charity events that are on display on the Parish noticeboards.

**Things to do:** Links to other websites for details of what's happening in and around this part of Cornwall, including

- Family days out near Morval
- Water fun activities in Cornwall
- The Looe directory
- South East Cornwall events diary
- An online version of the OS map for this area

**Charity events:** to publicise charity events done locally, or done by local people

**In Pictures:** interesting pictures of local stories.

**St Martin's Hill:** As the on-going repairs to St Martin's Hill have such an impact on parishioners, a separate webpage has been set up with information, including:

- The timetable for the shuttle bus service
- Continuing information from Cornwall County Council, concerning work completed and work scheduled for the near future
- Measures to support local businesses and residents

**Finally, a good website has to be responsive,** so if you can suggest improvements, please let us know; we'd like the website to be relevant to the needs of our parish.

**What's needed if you want a webpage on the Parish website?**

- Email the website to discuss what sort of page you'd like, and we'll set it up.
- You need to nominate somebody to be responsible for the information on your webpage, and for emailing it to us.
- We will update your page with the information you want displayed.
- To summarise:
  - you decide what goes on the page
  - we make it happen

## ***BIRD OF PASSAGE***

### *The Nightingale*

As shadows of the mist-dimmed night begin to pale with morning,  
ebbing from the glass-still glory bright,  
So have I long known I must flee the dapple-dazzle dawning,  
fluting gaily as I take my flight.

Those wind-blown fields of moon-scarred stars rang out with no  
compassion,  
raging of a bright and buried storm –  
The Maenad madness of the headlong night, the driven passion,  
forging all my dark red griefs to form.

‘Away my heart-sprung grief,’ the flame of life now starts to thunder,  
drowning out the hammer of the heart;  
‘Now ride God’s realm on wimpling wing with rapture and with  
wonder,  
thrilling with each plunge, lift, veer and dart.’

That Bacchant chorus of the dawn invades all silent grieving,  
haunting me like shadows on the sea;  
I’ll loose my limbs and set my course, and through the sweet air  
cleaving,  
singing, ‘farewell, I’m forever free.’

***Heather Taylor***

## **NOMANSLAND NEWS & EVENTS**

Whist every Wednesday 7-30

Mothers and Toddlers every Wednesday 9.30 – 11.30am (not in half term)

Jumble Sale 2.30pm Saturday 17<sup>th</sup> May.

# The **Pet Shop** **Liskeard**

Home  
Delivery  
Service Available



**01579 347144**

**[www.thepetshopliskeard.co.uk](http://www.thepetshopliskeard.co.uk)**

**The Pet Shop, Windsor Place, Liskeard, PL14 4BH**

**Does your child need extra help?**



**Maths and English tuition for  
KS1 to GCSE.**

**FREE ASSESSMENT**

**Give your child a brighter  
future.**

**[www.cgtuition.com](http://www.cgtuition.com)**

**BFM House, The Parade, Liskeard 01579 340400**

***"How can I be sure my wishes will be carried out when I've gone?"***

68 – 70% of the UK adult population don't have a Will. Those with children have particular reason to be organised about their wishes for their children.

Quite apart from the emotional turmoil the family will be experiencing if you die intestate (without a Will) – everything you have to leave will be divided up according to a set hierarchy called the 'Rules of Intestacy'. This starts with your spouse (even if you are not living with him/her) and then takes into account your children.

If you live with somebody but aren't married, that partner stands to inherit nothing if you die without a Will, with your estate going instead to your children or to your parents or brothers and sisters and so on down the family blood line.

If your children are under 18, it's vital that you make a Will in which you name their guardian(s) and clearly state what provisions you have made for them. If you and your partner aren't married, your estate will go to your children divided equally. If they aren't your partner's children the worst case scenario is that they could be left without a home or at the discretion of Social Services.

People can automatically think that because they are married or living with each other, the partner will inherit everything in the event of death – but of course this isn't the case. Add children into the equation and the scenario becomes even more complicated. We receive enquiries time and time again on these issues and can only urge people to make a Will to ensure that their wishes are carried out as they would like.

Have you written a **Will**?

Have you appointed **Lasting Power of Attorney**?

Have you **protected your property** by placing it in a **Trust**?

Do you have a pre-paid **funeral plan**?

Would **equity release** be of benefit or consideration?

**LEGACY**  
WILL WRITING • TRUSTS • ESTATE PLANNING

Free advice from Philip Head, Legacy Legal Services, Liskeard  
in the comfort of your home

call on Freephone: **0800 959 6171**

[www.LegacyLegalServices.org.uk](http://www.LegacyLegalServices.org.uk)

**AT&I** (South West)

**Portable Appliance Testing & Inspection**

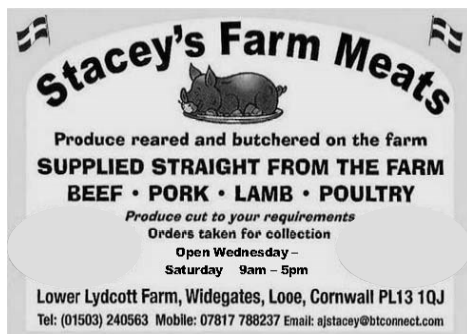
Commercial • Industrial • Residential Homes  
Hotels • Guest Houses • B & B • Leisure  
Caravan Equipment

**01752 851470**

C & G Qualified Technicians  
Testing & Inspections comply with the  
IEE Codes of Practice  
[www.atisouthwest.co.uk](http://www.atisouthwest.co.uk)



**K9 STYLE**  
PET GROOMING  
Jessica Tamblyn-Hayward  
Qualified Pet Groomer  
Bray Farm  
Bindown  
Nomansland, Near Looe  
01503 240841 or  
07834473835



**Stacey's Farm Meats**  
Produce reared and butchered on the farm  
**SUPPLIED STRAIGHT FROM THE FARM**  
**BEEF • PORK • LAMB • POULTRY**  
Produce cut to your requirements  
Orders taken for collection  
Open Wednesday –  
Saturday 9am – 5pm  
Lower Lydcott Farm, Widegates, Looe, Cornwall PL13 1QJ  
Tel: (01503) 240563 Mobile: 07817 788237 Email: [ajstacey@btconnect.com](mailto:ajstacey@btconnect.com)

## PIANO TUITION

**Beginners to Grade 8**  
**also, Music Theory**  
**Half hour lessons £ 10**  
**Hour lessons £ 20**

**HEATHER TAYLOR MA**

**01503 264474**

[hstaylorofcraigmore@hotmail.com](mailto:hstaylorofcraigmore@hotmail.com)



**Metherell Gard**  
Chartered Accountants and Registered Auditors

With over 80 years experience Metherell Gard offer confidential and up to date Accountancy and Taxation services specialising in small to medium-sized businesses and individuals. Whether you are a Sole Trader, Partnership, Limited Company, Club or Association we are client focussed and our range of services covers all aspects of accountancy from Business Start Up advice through to Tax Planning.

We pride ourselves in being reliable and approachable. As one of our valued clients, we will provide you with total commitment offering guidance and support to accompany our comprehensive range of services.

Metherell Gard, Morval, Looe, Cornwall, PL13 1PN

t:01503 240940 f: 01503 240950

e: [enquiries@metherellgard.co.uk](mailto:enquiries@metherellgard.co.uk)



Garden Maintenance  
Hedge Cutting  
Regular or one off lawn care  
All types of Fencing  
Garden Landscaping Projects  
Garden Clearance  
Fully Insured



DAVID PAGE.

Local to Looe with over 20 years of excellence in

Garden Maintenance & Landscaping.

For a free quote please call David on 01503 269027 or 07833096375

## A J P PROPERTY MAINTENANCE

TARMACING, DRAINAGE,  
DIGGERWORK, KERBING, STONEWALLING,  
FENCING, STEPS  
PAINTING, LANDSCAPING, PATIOS,  
PATHS, ALSO INSURANCE WORK

HOME 01503 240 125

WORK 07753 42 3962

EMAIL: [adrianprout@me.com](mailto:adrianprout@me.com)



**David Ellis BVSc. MRCVS**  
**Veterinary Surgeon**

**4c. Heathlands Road**  
**Liskeard**  
**PL14 4DH**

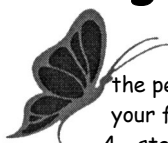
**Phone 01579 342 602**  
**Fax 01579 349568**

**Email: [davidellis@pensiiple.freesevice.co.uk](mailto:davidellis@pensiiple.freesevice.co.uk)**

**Surgery Hours:-**

**Mon-Fri**  
**9.00 - 10.00am &**  
**5.00 - 6.00pm**  
**Sat**  
**9.00 - 10.00am**

## Wringworthy Cottages



the perfect choice for when  
your family and friends visit  
4 - star cottages, open all year

[www.wringworthy.co.uk](http://www.wringworthy.co.uk) email: [holidays@wringworthy.co.uk](mailto:holidays@wringworthy.co.uk)

Wringworthy Cottages, Morval, Looe, Cornwall, PL13 1PR

tel. 01503 240685 fax. 01503 240830

resident owners: MICHAEL & KIM SPENCER

## MIKE KENSHOLE

### ELECTRICAL

**01503 240675**

**07778 524592**

**12 MORVIEW ROAD,**  
**WIDEGATES, LOOE,**  
**CORNWALL. PL13 1QE**

**[MIKE@KENSHOLEELECTRIC.CO.UK](mailto:MIKE@KENSHOLEELECTRIC.CO.UK)**  
**[WWW.KENSHOLEELECTRIC.CO.UK](http://WWW.KENSHOLEELECTRIC.CO.UK)**



All types of



Domestic & Commercial Work

Additional sockets & Lighting;  
PAT Testing;

Heating & Ventilation;

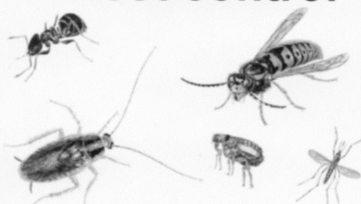
Landlord safety checks

Camping & Caravan Parks



[www.pestkilsouthwest.co.uk](http://www.pestkilsouthwest.co.uk)

## Pest control



PROFESSIONAL CONTROL  
OF PESTS - No call out fee

**07896595110**

**01579320915**

BOLVENTOR LAUNCESTON CORNWALL



## ***DOWN-ENDE HOUSE***

Exclusive Dining Venue – AA Four Star B&B Accommodation

We are delighted to specialize in smaller functions catering for a range of events including:

- Family celebrations
- Birthdays and Wakes
- Working lunches
- Anniversaries, Christenings
- Business breakfast meetings
- Bookings for Christmas now being taken

Special diet catered for \* Wheelchair accessible \* Car park with off road parking

Our conservatory dining room extends our present dining room and can be used for private dining for parties. We will be delighted to handle all arrangements, compose menus and suggest wines to make your occasion special.

- Each event tailored to your needs personally organized
- Excellent local produce prepared in house
- With an emphasis on friendly service and superb value for money

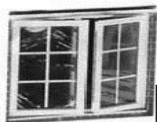
Widegates, Nr Looe, Cornwall, PL13 1QN – Tel 01503 240 213  
[www.downende.com](http://www.downende.com)



# **SOLARTEC**

## **Windows & Conservatories Ltd**

**'A' Rated WINDOWS & DOORS  
at BEST PRICES EVER!**



FENSA  
REGISTERED

Professionally fitted and finished by us with a  
**10 year ins. guarantee.**  
In all colours

**NEW**

### **FACTORY SHOP SUPPLY ONLY**

For all your windows, doors, conservatories,  
fascia, trims, guttering and sealants  
**7-10 DAY TURN AROUND ON WINDOWS,  
DOORS and CONSERVATORIES**

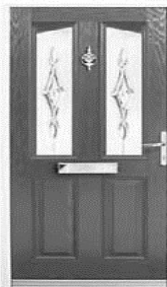
**TEL: 01579 343425**

**FAX: 01579 344500**

WEBSITE: [www.solartecwindows.co.uk](http://www.solartecwindows.co.uk)

EMAIL: [sales@solartecwindows.co.uk](mailto:sales@solartecwindows.co.uk)

**KEEPING JOBS IN CORNWALL**





## Moore Electrical

*Electrical Contractors*

- Domestic Installations
- Commercial and Agricultural
- Industrial
- Repairs and Rewires
- Portable Appliance Testing
- Periodic Inspection and Testing
- Fire Alarms and Emergency Lighting
- All work guaranteed and certificated
- Serving the Community since 1990

Tel. 01503 240298  
Mobile: 07881 940068

Menhay, Morval, Looe  
Cornwall PL13 1PR



## Pine Lodge

HOME CARE



*'Making the time to care'*

We provide a wide range of home care services.  
Whilst giving assistance with all aspects of  
personal care we are committed to achieving  
and maintaining independence.

Telephone: **01503 272016**

Email: **homecare@orchardcare.co.uk**

Website: **www.orchardcare.co.uk**

Pine Lodge Home Care, Restgarth Care Home,  
Langreek Lane, Polperro, Looe, Cornwall PL13 2PW

