

OUTLOOK

News and views from Around the Parish

December 2014/January 2015



MORVAL Parish

Circulated FREE to all homes in your parish

Please note that the opinions expressed within this publication are not those of the Parish Church,
Editors or anyone other than the authors of the articles.

Useful Contacts

Priest-in-Charge	Revd. Philip Sharp	263070
Church Wardens	Mike Willmott	240218
	Val Olver	240439
St. Wenna's Organist	Heather Taylor MA	264474
<i>Outlook</i> Editor	Meriel Kitson	240385
The Old Vicarage, Morval, Nr Looe, PL13 1PN		
meriel@outlookmorval.co.uk		
PCC Secretary and Parish Safeguarding Officer for Children		
&Vulnerable Adults	Maggie Willmott	240218
Bell Tower Captain	Robin Tamblyn	262772
County Councillor	Jim Candy	250376
Parish Council Chair	Peter Hunt hertep@talktalk.net	240303
Parish Clerk	Lynne Sutton	01579 326152
morvalparish@aol.com		
Morval Estate Office	John Kitson	241111
Widegates Hall }	Caroline Pengelly	
Reading Room }	carolinejpengelly@sky.com	240952
Nomansland Village Hall	Betty Powley	240650
Widegates Garden Club	Marie Bersey	240478
Morval Action Group	Tracy Chudleigh	240704
Trenode School & Toddlers		240235
Liskeard Community Hospital		01579 335600
NHS Direct (24 hour service)		111
Police (Non Urgent Calls)		101
Neighbourhood Team Leader: Sergeant Mick Howe		101
PCSO for Morval and Widegates: Steve Cocks		101
Dog Watch	Steve Cocks or	0300 1234 212
Morval Parish website	www.morvalwidegates.weebly.com	
Trenode School website	www.trenode.cornwall.sch.uk	
Viridor (report smells that may be associated with the landfill site)		01579 343006

Neighbourhood Watch

M Barber	240309	M Tamblyn	240267	M Wevell	240420
M Burt	240383	B Reynolds	240520	K Burt	240545

AN IMPORTANT MESSAGE FROM YOUR PARISH CHURCH

DEAR PARISHONERS

There has been a lot of press coverage recently of the difficult financial situation in which Truro Diocese finds itself. There are many reasons for this, most of them beyond the control of those who work tirelessly to keep our churches alive. Our priests are already expected to care for multiple communities, so any further cutbacks in clergy numbers would be counter productive. Because this problem is shared by all churches in Cornwall, a decision was made by Diocesan Synod to ask every church to increase its contribution to the diocese by 28% next year. For our church of St Wenna in Morval, this comes at a time when we are putting all our fundraising efforts into our re-ordering project, which is designed to make the church building useful and relevant to the local community, and the additional payment to the diocese will be hard to find. We do not argue with the increase, because we recognise the need to keep all churches alive, but we will need help from everyone who values our church. Those who are regular or occasional churchgoers can easily contribute by giving a little more in the collection, as 'every little' really does help. It is also possible to set up direct bank payments to the church, and we are hoping that some people who prefer not to come to church but who value its presence will want to do this, as a one-off contribution or on a regular basis.

Please contact churchwardens Mike Willmott or Val Olver if you are able to help.

Many thanks.

PARISH NEWS

Hello everybody

At its meeting held on Wednesday 12th October, PCSO Cocks informed the council that changes had occurred to the procedure for the police when accepting property that appears to have been lost by somebody. For the future the police will only be accepting items of significant monetary value such as a mobile phone or items that contain personal identifying information such as a passport. If you do find some lost property and are unsure what to do with it, further details of these new procedures can be obtained from Devon and Cornwall Constabulary web site or by telephoning the non emergency police number.

Arrangements will be made for representatives from Cornwall Wildlife Trust to speak to the council about a collaborative project that it is working on with farmers and landowners in the parish at one of its meetings early in the New Year. This Diffuse Water Pollution Reduction project is designed to improve the water quality across the local area and at surrounding beaches. Members of the public are welcome to attend this talk and once a date has been agreed I will ensure that it is advertised on the notice boards around the parish and in the Reading Room. Additionally, if anybody has difficulty accessing the boards, they can contact me and I will ensure that I let them know the date and time once it is known.

A new notice board has been very kindly erected by Mr Andrew Chudleigh at Sandplace to replace the one that fell down now.

Lynne Sutton

Clerk to Morval Parish Council

TRENODE MESSY CHURCH

Messy Advent took place on Friday 28th November and those attending learnt about the importance of giving and the story behind Advent. The next Messy Church is on Friday 23rd January at 3.30pm in the school hall and all families within the community and of those attending the school are welcome. It is for the whole family to participate in and join in. As usual there will be hotdogs for all. Please contact Helen Priestley for more details Tel 241188 email hpriestley.78@btinternet.com.

NEIGHBOURHOOD PLAN

PHASE 1 SUCCESSFULLY COMPLETED

Every parish in the country has the opportunity to create its own Neighbourhood Plan. This is a document, coordinated by ordinary parishioners, of local concerns and requirements that future developments within the parish must adhere to.

Phase 1 of Morval's Neighbourhood Plan has successfully been completed. This involved, by means of public meeting, the Parish website and Outlook magazine, giving parishioners the opportunity to tell the Neighbourhood Plan Committee about the subjects that they thought were important, and significant numbers of parishioners have contributed.

With Phase 1 successfully completed, this means that Phase 2 can start in the New Year. This will involve bidding for government money, and using it to fund a professional and experienced organisation to survey parishioners' opinions properly, and identify, with relevant evidence, all the key points that future planning and other developments must take account of.

What is so good about this Neighbourhood Plan idea is that it will mean that, in future, the views of local people must be listened to; no outside agency should be able to foist their ideas onto the parish, irrespective of whatever the parishioners think.

WIDEGATES HALL

Saturday 29th November

Garden Club Xmas Fayre 2 - 4pm

Friday 5th December

Xmas Bingo Eyes Down 7.30pm

REVISED DATE

Saturday 6th December

Coffee Morning in Aid of Cystic Fibrosis
10am until 1pm

Saturday 6th December

Nativity on the Green and Light Switch
on 6pm (including competition for best
decorated festive jumper, child and adult)

Monday 12th January

Hall Committee AGM 7pm

Friday 16th January

Beetle Dive 7.30pm All Welcome, adults
and children

Friday 30th January

Bingo Eyes Down 7.30pm

Flower Arranging

Thursdays at 7.30pm

REMEMBRANCE SUNDAY FOR THE CENTENARY OF THE GREAT WAR

There has been much in the news lately about this year being the Centenary of the Great War, and Morval has its own contribution to make. Whilst researching for a major exhibition in Morval Church about those who fell in the two world wars, it was discovered that 2 people on the war memorial had misspelt names, and one was missed off completely. So it was good and right that this could be rectified this year.

On Remembrance Sunday, the Act of Remembrance took place at the Morval War Memorial, just starting just before 11am so that the two-minute silence started exactly at 11am. There were the usual prayers of remembrance, with the wreathes laid, the British Legion standard was lowered, and the bugler played the Last Post and Reveille on either side of the two-minute silence.

However, this year, when each name of the fallen was read out, there was a thumbnail sketch of their life, including their age, their close family, which regiment they belonged to, and where they are buried, so that those who were attending could place the names they heard into some sort of context.

Afterwards, there was a special Remembrance Service in Morval Church, with an emphasis on commemorating the centenary. Poems written by the war poets were read, interspersed with poppies being carried and laid upon the altar, as was a wreath, and the bugler again played the Last Post and Reveille on either side of the two-minute silence.

Finally, the wreath was symbolically moved from the altar to the exhibition at the back of the church commemorating the Centenary of the Great War, and everyone joined in a prayer of commitment. After the service, there was coffee and time for reflection.

Unfortunately, the Parish Council had been unable to get the grant in time for Remembrance Sunday so names couldn't be amended or added, but hopefully this can be progressed at December's meeting, so that this final act of the focus on the centenary can be completed in 2014.

CHURCH SERVICES

ALL start at 11am unless otherwise stated.

NO FLOWERS IN ADVENT

Date 10.30am	30th November Joint Benefice Service St Nicholas	Date	1st December 6-00 pm Christingle with Trenode School
Date 9.30am 4.00pm	7th December Service at St. Nicholas with Bishop Chris. Tree Festival Dedication Service followed by Lanterns and Carol Singing in the Churchyard		
Date	8th - 14th December Christmas Tree Festival open 10-00 am -- 4-00 pm		
Date Service Reader Sides person	14th December Family Service Hayley Moore Anne Rice	Date 4-00pm Readers Sides person	21st December Carol Service T.B.A Churchwardens
Date Service Readers Sides persons Flowers	25th December Christmas Day Eucharist T.B.A. Churchwardens Carol Jay	Date Service Reader	28th December Morning Prayer T.B.A.
Date Service Reader Sides person	4th January 11am Eucharist Carolyn Burgoyne Brian Young	Date Service Reader Sides person	11th January 11am Family Service Ann Rice Helen Priestley
Date Service Reader Sides person	18th January 11am Eucharist Brian Young Hayley Moore	Date Service Reader Sides person	25th January 11am Morning Prayer Bridget MacArthur Anne Williams

HARVEST FESTIVAL WEEKEND CELEBRATIONS

OCTOBER 17-20

Thank you to all those who helped at the Saturday afternoon celebrations for the harvest festival at St. Wenna's. Particular thanks to the musicians who took part. Everyone thought what a nice, relaxed atmosphere was created as they walked around the church listening to the music whilst looking at all the different exhibits about our local farmers. All the money raised, entirely by donation, is to go to the renovation project of the church that is underway.

The youth concert on the preceding Friday evening was very successful. It just goes to show what talent there is in the parish, and how confident all the children were in performing.

REMEMBRANCE CONCERT NOVEMBER 8

This concert, which took place at Liskeard Methodist Church, was enjoyed by all those who did attend. The Polperro Fishermen's Choir sang a varied and rousing selection of songs such as 'Proper Job' and 'Battle Hymn of the Republic'. Anne Hughes played some lovely folk songs on her harp and the Liskeard Lady Singers sang an interesting and diverse range from their repertoire, including a newly composed piece called 'In Flanders Fields'. Our very own Maggie Willmott performed two wonderful pieces on her violin, the theme tune from 'Schindler's List' and 'Ashokan Farewell'.

All proceeds generated from the evening, the raffle and the donations towards refreshments amounted to almost £300 and will be given to the British Legion Poppy Appeal. Thank you to all those who supported this event. In particular, thanks to Reverend Mark who kindly acted as MC for the evening and the Deputy Mayor of Liskeard, Jane Pascoe, and her husband.

TRENODE C OF E VA SCHOOL

We were very pleased to be part of the Flower Festival that was held in the Village Hall to commemorate Remembrance Day. The floral displays were quite amazing and captured the themes very vividly. Thank you to Sue Augner for inviting us to take part.

Christmas is a delightful time in school. Our festivities traditionally start with Christingle. This Year our service will be held at St Wenna's on

Monday 1st December at 6.00pm. Our Nativity Play is on Thursday 4th and Friday 5th December at 9.30am in the School Hall. In the last week of term we will be performing "The Snow Queen" in the School Hall (Tuesday 18th December at 2.00pm and 6.00pm and Wednesday 19th December at 2.00pm and 6.00pm). Do come along and join us at these events. Tickets for the "The Snow Queen" will be available from the School Office.

Thank you for the Morrison's vouchers that have been dropped off at the school office. We really do appreciate them. They help to keep our gardening activities going and we look forward to a bumper crop again next year.

If you have, or know, any children that are due to start school in September 2015 you are welcome to pop into school so that we can show you around. Applications for School Admissions are due in by 15th January 2015. Please call the School Office for more information or to arrange a tour of the school.

Thank you everyone that has supported the school this year and we wish you all a Happy, Healthy and Peaceful New Year.

To find out more about what is happening at school go online and find us at: www.trenode.cornwall.sch.uk.

Mrs Lindsay. Headteacher

CHURCHES TOGETHER (Looe & District - Morval)

On Sunday 7th December there will be Churches Together Christmas Praise, 12 noon in the Quayside Centre, and a Taize service at 6pm at Riverside Church. The Churches Together 14th Christmas Day Lunch is at Looe Community School, 12 noon start. Don't be alone for Christmas - for all those who would otherwise be on their own (singles, couples, single-parent families). Transport is arranged for those who need it - must pre book, please contact Kathryn Tel 264937 or Alison Tel 264339. Volunteers to help with preparation and to serve on the day are most welcome. If you want to become involved in Churches Together work please contact Helen Priestley Tel 241188.

"We have already written our Wills, leaving everything to one another and then to the children when we've both gone ...".

- sounds familiar, doesn't it!

... but your children could end up with very little, irrespective of your worth today. The principle reason is that one or both of you could need residential care at some stage in your life, whether it's owing to an accident, say a car crash that leaves you physically or mentally incapable, or just through old age and not being able to manage.

Once upon a time this would not have been a problem because we relied upon the NHS or local authority to provide for our care. After all, we've paid our taxes and contributed to the National Insurance fund — but it doesn't work that way any more!

The Government does provide a safety net — if you have very few assets; but if you have assets over certain limits you will be expected to meet all your own care costs, and these can vary from £500 to £800 per week or more. It doesn't take long to spend thousands of pounds in this way.

Do you want to be absolutely certain the assets you have worked hard to acquire during your lifetime will provide for those you love when you've gone? If so, you need to protect them now, and not rely on your Will, which takes effect at the time of death, and in many cases is too late to protect assets from the challenges we face during life.

No two situations or circumstances are the same, so getting some free advice is a positive step in the right direction!

Have you written a **Will**?

Have you appointed **Lasting Power of Attorney**?

Have you **protected your property** by placing it in a **Trust**?

Do you have a pre-paid **funeral plan**?

Would **equity release** improve your quality of life?

LEGACY
WILL WRITING • TRUSTS • ESTATE PLANNING

Free advice from Philip Head, Legacy Legal Services, Liskeard
in the comfort of your home

call on Freephone: **0800 959 6171** or **07817 990230**

www.LegacyLegalServices.org.uk

The **Pet Shop** **Liskeard**

Home
Delivery
Service Available



01579 347144

www.thepetshopliskeard.co.uk

The Pet Shop, Windsor Place, Liskeard, PL14 4BH

Does your child need extra help?



**Maths and English tuition for
KS1 to GCSE.**

FREE ASSESSMENT

**Give your child a brighter
future.**

www.cgtuition.com

BFM House, The Parade, Liskeard 01579 340400

***CAROL** by Heather Taylor*

In a world grey and barren, a world lain waste by doubt,
winter's stealing hand of cruelty strips summer of all beauty
and nothing is left but wildness and cold,
and those who are companionless often turn to seek the grace,
the mercy of the Father, Creator God.

But, once there was a boy, a boy born to the world.
A son of the morning, of the pale winter morning,
a king of the dark months, a king for all seasons.

A great wind blows through the charged black air,
And a keening voice is heard in the expectant shadows.

Gone are the bright days, gone the days of singing.
The young king, the boy king, gone, all gone,
gone like smoke from a guttering candle.
Only dark days remain and a memory of a star that rose
in the rich ringing heights long, long ago.

He shall come again as spring follows winter.
The force of the rising green blade brings promise and stillness
and the calm golden days. Bright shall be his sign once more,
the burning whiteness of a star.

The logo for Stove Shop Renewables features the words "STOVE SHOP" in a serif font above "renewables" in a lowercase sans-serif font. A stylized circular arrow graphic is positioned between the two words, with the "re" of "renewables" partially enclosed by it. A large, thin, curved line arches over the entire logo.

STOVES - RENEWABLES - HEATING
TEL 01579 345018
7 PIKE ST, LISKEARD, PL14 3JE
WWW.STOVESHOP.CO.UK

AT&I (South West)

Portable Appliance Testing & Inspection

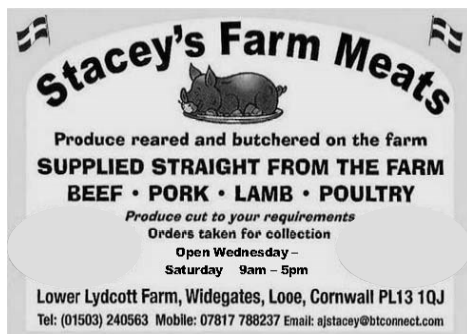
Commercial • Industrial • Residential Homes
Hotels • Guest Houses • B & B • Leisure
Caravan Equipment

01752 851470

C & G Qualified Technicians
Testing & Inspections comply with the
IEE Codes of Practice
www.atisouthwest.co.uk



K9 STYLE
PET GROOMING
Jessica Tamblyn-Hayward
Qualified Pet Groomer
Bray Farm
Bindown
Nomansland, Near Looe
01503 240841 or
07834473835



Stacey's Farm Meats
Produce reared and butchered on the farm
SUPPLIED STRAIGHT FROM THE FARM
BEEF • PORK • LAMB • POULTRY
Produce cut to your requirements
Orders taken for collection
Open Wednesday –
Saturday 9am – 5pm
Lower Lydcott Farm, Widegates, Looe, Cornwall PL13 1QJ
Tel: (01503) 240563 Mobile: 07817 788237 Email: ajstacey@btconnect.com

PIANO TUITION

Beginners to Grade 8
also, Music Theory
Half hour lessons £ 10
Hour lessons £ 20

HEATHER TAYLOR MA

01503 264474

hstaylorofcraigmore@hotmail.com



Metherell Gard
Chartered Accountants and Registered Auditors

With over 80 years experience Metherell Gard offer confidential and up to date Accountancy and Taxation services specialising in small to medium-sized businesses and individuals. Whether you are a Sole Trader, Partnership, Limited Company, Club or Association we are client focussed and our range of services covers all aspects of accountancy from Business Start Up advice through to Tax Planning.

We pride ourselves in being reliable and approachable. As one of our valued clients, we will provide you with total commitment offering guidance and support to accompany our comprehensive range of services.

Metherell Gard, Morval, Looe, Cornwall, PL13 1PN

t:01503 240940 f: 01503 240950

e: enquiries@metherellgard.co.uk



Garden Maintenance
Hedge Cutting
Regular or one off lawn care
All types of Fencing
Garden Landscaping Projects
Garden Clearance
Fully Insured



DAVID PAGE.

Local to Looe with over 20 years of excellence in

Garden Maintenance & Landscaping.

For a free quote please call David on 01503 269027 or 07833096375

A J P PROPERTY MAINTENANCE

TARMACING, DRAINAGE,
DIGGERWORK, KERBING, STONEWALLING,
FENCING, STEPS
PAINTING, LANDSCAPING, PATIOS,
PATHS, ALSO INSURANCE WORK

HOME 01503 240 125

WORK 07753 42 3962

EMAIL: adrianprout@me.com



**David Ellis BVSc. MRCVS
Veterinary Surgeon**

**4c. Heathlands Road
Liskeard
PL14 4DH**

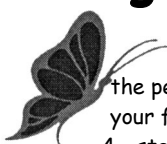
**Phone 01579 342 602
Fax 01579 349568**

Email: davidellis@pensiiple.freemove.co.uk

Surgery Hours:-

**Mon-Fri
9.00 - 10.00am &
5.00 - 6.00pm
Sat
9.00 - 10.00am**

Wringworthy Cottages



the perfect choice for when
your family and friends visit
4 - star cottages, open all year

www.wringworthy.co.uk email: holidays@wringworthy.co.uk

Wringworthy Cottages, Morval, Looe, Cornwall, PL13 1PR

tel. 01503 240685 fax. 01503 240830

resident owners: MICHAEL & KIM SPENCER

MIKE KENSHOLE

ELECTRICAL

01503 240675

07778 524592

**12 MORVIEW ROAD,
WIDEGATES, LOOE,
CORNWALL. PL13 1QE**

**MIKE@KENSHOLEELECTRIC.CO.UK
WWW.KENSHOLEELECTRIC.CO.UK**



APPROVED
CONTRACTOR

All types of



DOMESTIC
INSTALLER

Domestic & Commercial Work

Additional sockets & Lighting;
PAT Testing;

Heating & Ventilation;

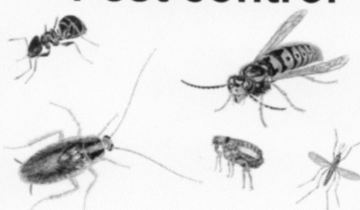
Landlord safety checks

Camping & Caravan Parks



www.pestkilsouthwest.co.uk

Pest control



**PROFESSIONAL CONTROL
OF PESTS - No call out fee**

07896595110

01579320915

BOLVENTOR LAUNCESTON CORNWALL



DOWN-ENDE HOUSE

Exclusive Dining Venue – AA Four Star B&B Accommodation

We are delighted to specialize in smaller functions catering for a range of events including:

- Family celebrations
- Birthdays and Wakes
- Working lunches
- Anniversaries, Christenings
- Business breakfast meetings
- Bookings for Christmas now being taken

Special diet catered for * Wheelchair accessible * Car park with off road parking

Our conservatory dining room extends our present dining room and can be used for private dining for parties. We will be delighted to handle all arrangements, compose menus and suggest wines to make your occasion special.

- Each event tailored to your needs personally organized
- Excellent local produce prepared in house
- With an emphasis on friendly service and superb value for money

Widegates, Nr Looe, Cornwall, PL13 1QN – Tel 01503 240 213
www.downende.com



SOLARTEC

Windows & Conservatories Ltd

**'A' Rated WINDOWS & DOORS
at BEST PRICES EVER!**



FENSA
REGISTERED

Professionally fitted and finished by us with a
10 year ins. guarantee.
In all colours

NEW

FACTORY SHOP SUPPLY ONLY

For all your windows, doors, conservatories,
fascia, trims, guttering and sealants
**7-10 DAY TURN AROUND ON WINDOWS,
DOORS and CONSERVATORIES**

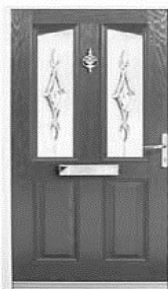
TEL: 01579 343425

FAX: 01579 344500

WEBSITE: www.solartecwindows.co.uk

EMAIL: sales@solartecwindows.co.uk

KEEPING JOBS IN CORNWALL



moore electrical

01503 240298



mooreelectricallooe.co.uk

- Domestic Installations
- Commercial and Agricultural
- Industrial
- Repairs and Rewires
- Portable Appliance Testing
- Electrical Condition Reports
- Fire Alarms and Emergency Lighting
- All work guaranteed and certificated
- Serving the Community since 1990

Tel. 01503 240298
Mobile: 07881 940068

Menhay, Morval, Looe, Cornwall PL13 1PR



Pine Lodge

HOME CARE



'Making the time to care'

We provide a wide range of home care services.
Whilst giving assistance with all aspects of
personal care we are committed to achieving
and maintaining independence.

Telephone: **01503 272016**

Email: **homecare@orchardcare.co.uk**

Website: **www.orchardcare.co.uk**

Pine Lodge Home Care, Restgarth Care Home,
Langreek Lane, Polperro, Looe, Cornwall PL13 2PW

