

OUTLOOK

NEWS AND VIEWS FROM MORVAL
AND WIDEGATES



December 2013/January 2014

Please note that the opinions expressed within this publication are not those of the Parish Church,
Editors or anyone other than the authors of the articles.

Useful Contacts

| | | |
|--|--|--------------|
| Priest-in-Charge | Rev. Philip Sharp | 263070 |
| Readers | Rosie Woodcock | 265482 |
| | John Potter | 264986 |
| Church Wardens | Mike Willmott | 240218 |
| | Val Olver | 240439 |
| St. Wenna's Organist | Heather Taylor MA | 264474 |
| <i>Outlook</i> Editor | Meriel Kitson | 240385 |
| The Old Vicarage, Morval, Nr Looe, PL13 1PN | | |
| meriel@outlookmorval.co.uk | | |
| PCC Secretary and Parish Safeguarding Officer for Children | | |
| & Vulnerable Adults | Maggie Willmott | 240218 |
| Bell Tower Captain | Robin Tamblyn | 262772 |
| County Councillor | Jim Candy jcandy@cornwall.gov.uk | 250376 |
| Parish Council Chair | Clive Pearn | 240359 |
| Parish Clerk | Lynne Sutton | 01579 326152 |
| morvalparish@aol.com | | |
| Morval Estate Office | John Kitson | 241111 |
| Widegates Reading Room | Yvonne Greenaway | 240343 |
| Nomansland Village Hall | Betty Powley | 240650 |
| Widegates Garden Club | Marie Bersey | 240478 |
| Morval Action Group | Tracy Chudleigh | 240704 |
| Trenode School & Toddlers | | 240235 |
| Liskeard Community Hospital | | 01579 335600 |
| NHS Direct (24 hour service) | | 111 |
| Police (Non Urgent Calls) | | 101 |
| Neighbourhood Team Leader: Sergeant Russ Hall | | 101 |
| PCSO for Morval and Widegates: Steve Cocks | | 101 |
| Dog Watch | Steve Cocks or 0300 1234 212 | |
| Morval Parish website | www.morvalwidegates.weebly.com | |
| Trenode School website | www.trenode.cornwall.sch.uk | |

Neighbourhood Watch

| | | | | | |
|----------|--------|------------|--------|----------|--------|
| M Barber | 240309 | M Tamblyn | 240267 | M Wevell | 240420 |
| M Burt | 240383 | B Reynolds | 240520 | K Burt | 240545 |

EDITORIAL

I would like to wish everyone in Morval Parish and Widegates Village a happy and peaceful Christmas and New Year. My thanks to everyone who has helped with Outlook during 2013 in so many different ways, including the faithful few who may actually read it before using it to light the fire or add to the recycling pile.

WHAT WAS THE STAR OF BETHLEHEM?

There is to be an illustrated talk entitled ‘The Star of Bethlehem – an astronomer’s view’, at 7pm on Friday 3rd January in St Martin’s Hall, Looe, when local astronomer Mike Willmott will approach this problem by using the prevailing astronomical knowledge of the time as a starting point. As the various strands are pulled together, an understanding of what the Star of Bethlehem really was should emerge. There will be a nominal entrance charge, for church funds, and everyone is welcome to attend.

MORVAL NEWS & EVENTS

Trenode School PTA is collecting clothes and material, shoes and bedding for a date in February or March. No Duvet’s or pillows please. Suggest you put a large bag somewhere when you feel inspired to start spring cleaning. Thank you.

We were sad to hear of the death in November of Jean Compton. Jean died at home peacefully and with great dignity, and both her daughters, Pat and Sandra, were with her.

Jean and her husband Jeff supported Morval church for many years, with Jeff reading lessons and Jean on the flower rota. They delivered Outlook to far flung parts of the parish magazine to far flung parts of the parish for many years. They both loved living in Cornwall after retiring here 30 years ago, and never grew tired of their beloved Looe.

PARISH NEWS

Hello Everyone. There has been some positive movement on the Asset Transfer of Widegates "Village Green". After a few amendments to the draft lease, Councillors Pearn and Hunt were able to meet with the solicitor in order to sign copies of the lease proper. All that remains of the actual transfer process now is a date from Cornwall Council when the matter will be finalised and the parish council take responsibility for it on behalf of the community. There will still be a few necessary things to be put in place to ensure that the parish council do not breach the contract with Cornwall Council and meet its legal obligations but, in general at this stage, it is a positive step forward.

A concern was raised by a resident of Widegates recently surrounding people not picking up after their dogs relieve themselves. The council would remind people that it is an offence not to do so and alongside this would appeal to anybody tempted to leave their dog's mess on the pavement or the green to think again. It is unsightly and can cause problems for other members of the community. It has been established that the bins currently dotted around the village are now able to hold dog waste as well as litter, so please use them so that the village is not spoilt by unsightly piles of dogs mess.

Councillor Hunt expects to be away from council business until March 2014. In his absence, Councillor Spencer will act as Vice-Chair and Councillor Kitson will carry out the role of Portfolio Holder for Planning. Both councillors will continue to lead the Neighbourhood Planning process and any body still wishing to be part of this group can make their interest known to either councillor or to me.

It was also agreed that the council would have some space on the parish web site for the purpose of passing on information that may prove useful to residents.

The council considered the grants requests received at its last meeting and except for exceptional circumstances will consider further requests at its May 2014 meeting. Please let me know if you require an application form and a copy of the grants policy.

Lynne Sutton. Clerk to Morval Parish Council

CHURCHES TOGETHER LOOE & DISTRICT

At the recent AGM, Rosie Woodcock was elected Chair, Rev. Andrew Hill (Methodist Minister Looe & District): Vice-Chair, Kathy Lang: Publicity Officer, Dawn White: Secretary, Deborah Hillier: Treasurer, Rev. Marilyn Elliott: Chair of Cornerstone Trust. (Rosie Woodcock is also St. Wenna's rep - for information please call her: 01503265482)

Date: 1 December Sunday 6 pm @ St. Nicholas' Church: Candlelit Taize Service

CELTIC HARVEST FESTIVAL

This was a most enjoyable weekend, featuring two excellent concerts, two special services, and a church full of Celtic creativity. Donations are still coming in, so we are unable to give a final figure for money raised, but Trenode School will be making a donation to the local food bank from money raised at the Harvest Festival service, and will help the church's reordering project fund. Many thanks to all involved

TRERULEFOOT LOCAL PRODUCE MARKET KERNOW MILL, CORNWALL (OFF A38) CHRISTMAS OPENING HOURS

| | |
|------------------------|--------|
| Thursday 19th December | 10 - 4 |
| Friday 20th December | 10 - 4 |
| Saturday 21st December | 10 - 4 |
| Sunday 22nd December | 10 - 4 |
| Monday 23rd December | 9 - 2 |
| Tuesday 24th December | 9 - 1 |
| Friday 27th December | 10 - 2 |
| Saturday 28th December | 10 - 4 |
| Monday 30th December | 9 - 2 |
| Tuesday 31st December | 9 - 2 |
| Friday 3rd January | 10 - 4 |
| Saturday 4th January | 10 - 4 |

GOT EVERYTHING YOU NEED FOR THE FESTIVE SEASON?

- *Food for the Christmas table*
- *Handmade Gifts & Presents*
- *Local Fruit & Veg*
- *Holly Wreaths & More.....*

**ITEMS CAN BE RESERVED
FOR COLLECTION FROM THE
MARKET**

**WWW.FACEBOOK.COM/
TRERULEFOOTLOCALPRODUCE MARKET**

AMOS

Early fifties. Dark brown hair, peppered grey. Open, honest face, tanned and weather-beaten from a life spent outdoors. A ready smile. A deep, kind voice.

The brightness seemed to increase when he finally moved towards us. I felt like I held my breath all the while he took to walk down. He looked so tall and fine and unlike any man I'd ever seen before. No priest ever had that look of, well, I can only call it grace. When he spoke he told us not to worry or be afraid, and from the moment I heard his voice I believed him. He went on to tell us he was a messenger sent to deliver such news that would bring joy to men and women throughout the world and that we, shepherds that we were, were blessed to be the first to witness this wonder. He went on to tell us where we could find this wonder, which was a baby sent from God, and how we would be able to know him and that this good news must be shared. Then he started to sing praises to God and as his voice echoed all around the hilltops so the brightness about him grew, and he was joined by another, then another, until so many appeared singing and praising God with that brightness so glorious and gleaming.

The night seemed silent and empty when they left. It was so sudden that for a moment we dared not move. Our eyes had been blinded by that wondrous brightness and now the darkness took a lot of getting used to. It was Joel who suggested we go and look for the baby. "Bethlehem, he said. That's not so far away. A baby in cloth bands. Lying in a manger. Sheep can look after themselves for a bit." So we went. The sheep didn't mind being left, like he said. A couple of lambs followed us though. It was like they wanted to have their part.

It didn't take us long to find him. In a manger, wrapped in cloth bands, just like we were told he'd be. The mother and the father weren't able to find a place to stay in Bethlehem. No rooms were available in any of the lodging places.

continued on page 5

Amos continued

They looked quite poor. I think he was a craftsman of sorts. A carpenter perhaps, judging by his hands. We told the parents what had happened and how we'd learnt of their baby's birth. The mother, young she was, looked amazed by what we said and was greatly moved.

That night we felt we could do anything. We were fearless. We knocked on doors and sang and shouted in streets. We told everyone we met about what we'd seen and what had happened. We felt we were a part of something bigger and brighter, and we felt bigger and brighter because of it. For a while everyone seemed to be talking about us, those shepherds from Jerusalem. Everyone wanted to hear our story again and again. We never tired of telling it and people never tired of hearing it.

But as with all things such excitement dies down like a flame when a candle burns low and gutters out. The mystery and the miracle no longer interested people. They forget easily. We became shepherds again. But we weren't just shepherds anymore because we were different. We'd been chosen to be a part of something. We still are a part of it.

Heather Taylor

ST WENNAS Christmas tree festival will be open from 10am - 4pm on 9th - 15th December The church will be fill with 12 trees sponsored and decorated by local community social networks and businesses, and a tree for personal dedications. The donations will be going towards the refurbishment of the church. There will be a concert by the Liskeard Ladies Singers on the 14th; Saturday evening with supper afterwards. Please support this event If there is anyone who would wish to help by being a steward please contact Val Olver 01503 240439

Christmas can be a sad and lonely time for many people. If you would like to buy a wreath to remember someone, please contact one of the Church Wardens. Tel. Numbers are on the front inside page of Outlook.

WIDEGATES GARDEN CLUB

December no meeting.

January 29th Wednesday 7-30pm Wild about Cornwall,
by David Chapman.

WIDEGATES NEWS & EVENTS

December 7th Come and help celebrate the lighting up of Widegates Christmas Tree. Sing Carols on the Village Green 6pm. Head for the Hall/RR if raining. Bring warm dressing gowns, Kings Kit or Angels attire, or your usual self.

December 14th Xmas meal 1pm.

January 18th 2014 Coffee Morning. 10am Proceeds to the vital work of the R.N.L.I.

January 25th Table top in the Hall 2pm --4pm Contact for tables 01503240104.

Pilates every Monday 6-30-7-30. **Yoga** every Wednesday afternoon 1-30-2-30.

THE A.G.M. will be **MONDAY 13th JANUARY.7.30pm**. Please come along we need new ideas and projects for the future. PLEASE contact Yvonne Greenaway on 01503 240 343 if you are interested in the Honorary position of secretary to Widegates Hall/RR committee. It would be most helpful if you could come to the AGM.

Merry Christmas & Happy New Year.

Yvonne

NOMANSLAND NEWS AND EVENTS

Saturday 7th Dec Christmas Fayre 2-30. Teas, various stalls, and Father Christmas.

Friday 20th Dec Christmas Bingo, doors open 7pm, eyes down 8pm.

Saturday 21st Dec Carol service 6:30 pm followed by mince pies.

A cheque for £729-00 will be sent to The Cornwall Children's Hospice. Thanks and congratulations to all who contributed to raising this amazing sum. The laying of wreaths and remembrance service at the Hall was well attended. Whist drives continue on Wednesdays at 7-30. Mother and Toddler re-start after Christmas with the New School term.

Morval Handbell Ringers The ringers were last heard in the Celtic Festival concert in October. They are now rehearsing Christmas pieces, ready for the Widegates Nativity on 7th December and St Wenna's Carol Service on the 22nd.

Remembrance The Act of Remembrance at Morval's War Memorial was very well attended, and was made special by Andy Liddicoat's beautiful bugle playing. A full service followed in St Wenna's Church, with the £45 collection being donated to the Royal British Legion

CHURCH SERVICES

ALL start at 11am unless otherwise stated.

DECEMBER 2013

| Date | 1st December |
|-------------|---------------------|
| Service | Eucharist |
| Reader | Brian Young |
| Sidesperson | Anne Williams |
| Flowers | No Flowers |

| Date | 8th December |
|-------------|---------------------|
| Service | Family Service |
| Reader | Mike Willmott |
| Sidesperson | Val Olver |
| Flowers | No Flowers |

| Date | 15th December |
|-------------|----------------------|
| Service | Eucharist |
| Reader | Mary Howe |
| Sidesperson | Anne Rice |
| Flowers | No Flowers |

| Date | 22nd December |
|-------------|----------------------|
| Service | Carol Service 4pm |
| Reader | TBA |
| Sidesperson | TBA |
| Flowers | No Flowers |

| Date | 25th December |
|-------------|--|
| Service | Christmas Eucharist (Christmas Day) |
| Reader | TBA |
| Sidesperson | TBA |
| Flowers | Carol Jay |

| Date | 29th December |
|-------------|----------------------|
|-------------|----------------------|

No Service at Morval - combined service at St. Nicholas, Looe at 10.30am

JANUARY 2014

| Date | 5th January |
|-------------|--------------------|
| Service | Eucharist |
| Reader | Val Olver |
| Sidesperson | B. MacArthur |
| Flowers | Sue Aunger |

| Date | 12th January |
|-------------|---------------------|
| Service | Family Service |
| Reader | Helen Priestly |
| Sidesperson | Anne Rice |
| Flowers | Mary Howe |

| Date | 19th January |
|-------------|---------------------|
| Service | Eucharist |
| Reader | Mary Howe |
| Sidesperson | Val Olver |
| Flowers | Mary Howe |

| Date | 26th January |
|-------------|---------------------|
| Service | Morning Prayer |
| Reader | B. MacArthur |
| Sidesperson | C. Burgoyne |
| Flowers | Julia Tamblyn |

Please note that the list with the Bible readings on it will be given to the above people individually and will also be pinned up in the Porch of the church. Thank you for reading and being sidesperson. If you need to change your date or have any queries, please contact Val Olver: 01503-240439. Any problems with flower rota contact Sue Aunger 01503 241 063.

TRENODE C OF E VA SCHOOL

Christmas is a very special time in school. Our festivities traditionally start with Christingle. This Year our service will be held at St Wenna's on Monday 2nd December at 6.00pm. Our Nativity Play is on Friday 6th December at 9.30am in the School Hall. In the last week of term we will be performing "Cinderella and Rockerfella" in the School Hall (Tuesday 17th December at 1.45pm and 6.00pm and Wednesday 18th December at 1.45pm and 6.00pm). Do come along and join us at these events. Tickets for the Cinderella and Rockerfella will be available from the School Office. We also have a party and disco planned for the children so that they can celebrate the season in style.

A huge thank you to everyone that supported our "Walk To Glasgow and Back" event. We managed to walk the 1000 miles (500 miles each way) and raised in excess of £1000, which we will be spending on new ICT equipment. "Why Glasgow?" I hear you say. Glasgow will be the venue for the Commonwealth Games next summer and our school teams this year are named after Commonwealth Countries. The walk was a real community effort and so many were involved in so many ways. The children were very enthusiastic and there were few complaints about walking, even in the rain!

Have you heard of Treasures@Trenode? This is an exciting new opportunity for families with pre school aged children to come along and be involved. Stimulating creative activities (crafts, music, singing and dancing) are available, along with large and small play. Healthy snacks are provided for just £1.50 per family.

Thank you for the Morrison's vouchers that have been dropped off at the school office. We really do appreciate them. They help to keep our gardening activities going and we look forward to a bumper crop again next year.

Thank you everyone that has supported the school this year and we wish you all a Happy, Healthy and Peaceful New Year.

To find out more about what is happening at school go online and find us at: www.trenode.cornwall.sch.uk.

Mrs Lindsay. Headteacher

The **Pet Shop** **Liskeard**

Home
Delivery
Service Available



01579 347144

www.thepetshopliskeard.co.uk

The Pet Shop, Windsor Place, Liskeard, PL14 4BH

Does your child need extra help?



**Maths and English tuition for
KS1 to GCSE.**

FREE ASSESSMENT

**Give your child a brighter
future.**

www.cgtuition.com

BFM House, The Parade, Liskeard 01579 340400



Pine Lodge

HOME CARE



We provide a wide range of home care services.
Whilst giving assistance with all aspects of
personal care we are committed to achieving
and maintaining independence.

Telephone: **01503 272016**

Email: **homecare@orchardcare.co.uk**

Website: **www.orchardcare.co.uk**

Pine Lodge Home Care, Restgarth Care Home,
Langreck Lane, Polperro, Looe, Cornwall PL13 2PW



STOVE SHOP ren@wables

STOVES - RENEWABLES - HEATING

TEL 01579 345018

7 PIKE ST, LISKEARD, PL14 3JE

WWW.STOVESHOP.CO.UK

AT&I (South West)

Portable Appliance Testing & Inspection

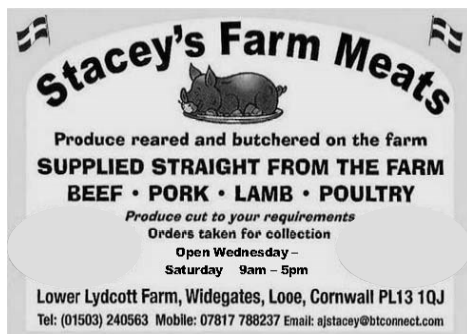
*Commercial • Industrial • Residential Homes
Hotels • Guest Houses • B & B • Leisure
Caravan Equipment*

01752 851470

*C & G Qualified Technicians
Testing & Inspections comply with the
IEE Codes of Practice
www.atisouthwest.co.uk*



K9 STYLE
PET GROOMING
Jessica Tamblyn-Hayward
Qualified Pet Groomer
Bray Farm
Bindown
Nomansland, Near Looe
01503 240841 or
07834473835



Stacey's Farm Meats
Produce reared and butchered on the farm
SUPPLIED STRAIGHT FROM THE FARM
BEEF • PORK • LAMB • POULTRY
*Produce cut to your requirements
Orders taken for collection
Open Wednesday –
Saturday 9am – 5pm*
Lower Lydcott Farm, Widegates, Looe, Cornwall PL13 1QJ
Tel: (01503) 240563 Mobile: 07817 788237 Email: ajstacey@btconnect.com

PIANO TUITION

**Beginners to Grade 8
also, Music Theory
Half hour lessons £ 10
Hour lessons £ 20**

HEATHER TAYLOR MA

01503 264474

hstaylorofcraigmore@hotmail.com



Metherell Gard
Chartered Accountants and Registered Auditors

With over 80 years experience Metherell Gard offer confidential and up to date Accountancy and Taxation services specialising in small to medium-sized businesses and individuals. Whether you are a Sole Trader, Partnership, Limited Company, Club or Association we are client focussed and our range of services covers all aspects of accountancy from Business Start Up advice through to Tax Planning.

We pride ourselves in being reliable and approachable. As one of our valued clients, we will provide you with total commitment offering guidance and support to accompany our comprehensive range of services.

Metherell Gard, Morval, Looe, Cornwall, PL13 1PN

t:01503 240940 f: 01503 240950

e: enquiries@metherellgard.co.uk

W. B. Harding & Sons

Scrap Metal Merchants

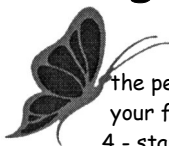
Vehicle Dismantlers

Car Collection Service

Trebrownbridge, Horningtops,
Liskeard, Cornwall
PL14 3PX

01503 240271

Wringworthy Cottages



the perfect choice for when
your family and friends visit
4 - star cottages, open all year

www.wringworthy.co.uk email: holidays@wringworthy.co.uk

Wringworthy Cottages, Morval, Looe, Cornwall, PL13 1PR

tel. 01503 240685 fax. 01503 240830

resident owners: MICHAEL & KIM SPENCER



David Ellis BVSc. MRCVS
Veterinary Surgeon

4c. Heathlands Road
Liskeard
PL14 4DH

Phone 01579 342 602
Fax 01579 349568

Surgery Hours:-

Mon-Fri
9.00 - 10.00am &
5.00 - 6.00pm
Sat
9.00 - 10.00am

Email: davidellis@pensiiple.freesevice.co.uk

**To Advertise here please
contact**

01503 240385

MIKE KENSHOLE

ELECTRICAL

01503 240675

07778 524592

12 MORVIEW ROAD,
WIDEGATES, LOOE,
CORNWALL. PL13 1QE

MIKE@KENSHOLEELECTRIC.CO.UK
WWW.KENSHOLEELECTRIC.CO.UK



All types of



Domestic & Commercial Work

Additional sockets & Lighting;
PAT Testing;

Heating & Ventilation;

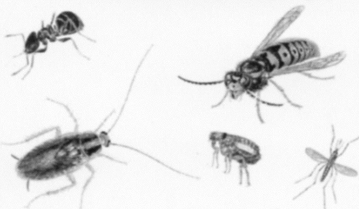
Landlord safety checks

Camping & Caravan Parks



www.pestkilsouthwest.co.uk

Pest control



PROFESSIONAL CONTROL
OF PESTS - No call out fee

07896595110

01579320915

BOLVENTOR LAUNCESTON CORNWALL



DOWN-ENDE HOUSE

Exclusive Dining Venue – AA Four Star B&B Accommodation

We are delighted to specialize in smaller functions catering for a range of events including:

- Family celebrations
- Birthdays and Wakes
- Working lunches
- Anniversaries, Christenings
- Business breakfast meetings
- Bookings for Christmas now being taken

Special diet catered for * Wheelchair accessible * Car park with off road parking

Our conservatory dining room extends our present dining room and can be used for private dining for parties. We will be delighted to handle all arrangements, compose menus and suggest wines to make your occasion special.

- Each event tailored to your needs personally organized
- Excellent local produce prepared in house
- With an emphasis on friendly service and superb value for money

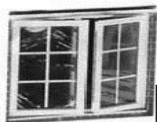
Widegates, Nr Looe, Cornwall, PL13 1QN – Tel 01503 240 213
www.downende.com



SOLARTEC

Windows & Conservatories Ltd

**'A' Rated WINDOWS & DOORS
at BEST PRICES EVER!**



FENSA
REGISTERED

Professionally fitted and finished by us with a
10 year ins. guarantee.
In all colours

NEW

FACTORY SHOP SUPPLY ONLY

For all your windows, doors, conservatories,
fascia, trims, guttering and sealants
**7-10 DAY TURN AROUND ON WINDOWS,
DOORS and CONSERVATORIES**

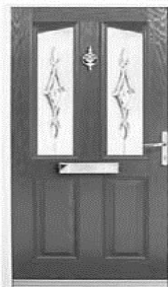
TEL: 01579 343425

FAX: 01579 344500

WEBSITE: www.solartecwindows.co.uk

EMAIL: sales@solartecwindows.co.uk

KEEPING JOBS IN CORNWALL





Moore Electrical

Electrical Contractors

- Domestic Installations
- Commercial and Agricultural
- Industrial
- Repairs and Rewires
- Portable Appliance Testing
- Periodic Inspection and Testing
- Fire Alarms and Emergency Lighting
- All work guaranteed and certificated
- Serving the Community since 1990

Tel. 01503 240298

Mobile: 07881 940068

Menhay, Morval, Looe
Cornwall PL13 1PR



BINDOWN STORES AND **POST OFFICE**

NO MAN'S LAND, NR. LOOE

**FULLY STOCKED WITH ALL YOUR GROCERY
REQUIREMENTS AT SENSIBLE PRICES**

INCLUDING

BEERS, WINES AND SPIRITS

ALSO

COAL & LOGS

OPENING HOURS

MONDAY TO SATURDAY 7.00am to 6.00pm
SUNDAY 8.00am to 2.00pm

We Look Forward To Seeing You Soon

ELAINE & MARTIN

TEL: 01503 240840