

OUTLOOK

**NEWS AND VIEWS FROM MORVAL
AND WIDEGATES**



April 2015

Please note that the opinions expressed within this publication are not those of the Parish Church,
Editors or anyone other than the authors of the articles.

Useful Contacts

Priest-in-Charge	Revd. Philip Sharp	263070
Church Wardens	Mike Willmott	240218
	Val Olver	240439
St. Wenna's Organist	Heather Taylor MA	264474
<i>Outlook</i> Editor	Meriel Kitson	240385
The Old Vicarage, Morval, Nr Looe, PL13 1PN		
meriel@outlookmorval.co.uk		
PCC Secretary and Parish Safeguarding Officer for Children		
&Vulnerable Adults	Maggie Willmott	240218
Bell Tower Captain	Robin Tamblyn	262772
County Councillor	Jim Candy	250376
Parish Council Chair	Peter Hunt hertep@talktalk.net ,	240303
Parish Clerk	Lynne Sutton	01579 326152
morvalparish@aol.com		
Morval Estate Office	John Kitson	241111
Widegates Hall }	Caroline Pengelly	
Reading Room }	carolinejpengelly@sky.com	240952
Nomansland Village Hall	Betty Powley	240650
Widegates Garden Club	Marie Bersey	240478
Morval Action Group	Tracy Chudleigh	240704
Trenode School & Toddlers		240235
Liskeard Community Hospital		01579 335600
NHS Direct (24 hour service)		111
Police (Non Urgent Calls)		101
Neighbourhood Team Leader: Sergeant Mick Howe		101
PCSO for Morval and Widegates: Steve Cocks		101
Dog Watch	Steve Cocks or	0300 1234 212
Morval Parish website	www.morvalwidegates.weebly.com	
Trenode School website	www.trenode.cornwall.sch.uk	
Viridor (report smells that may be associated with the landfill site)		01579 343006

Neighbourhood Watch

M Barber	240309	M Tamblyn	240267	M Wevell	240420
M Burt	240383	B Reynolds	240520	K Burt	240545

EDITORIAL

The weather is still cold and miserable, Snowdrops and Daffodils are a promise that warmer weather is on the way. I am cheered most by the sound of Owls. I have been told that one Owl twits and its mate twoos, I remain unconvinced. What keeps your spirits up at this time of year ?

WIDEGATES VILLAGE HALL

09/4	Flower Arranging	07.00pm
16/4	Flower Arranging	07.00pm
18/4	Beetle Drive	07.30pm
23/4	Flower Arranging	07.00pm
24/4	Bingo, Eyes Down	07.30pm
30/4	Flower Arranging	07.00pm

Several people have asked what Beetle Drives are and what you have to do. This little explanation may help people understand and want to join in the fun :

A **beetle drive** is an old favourite - a simple game requiring only paper, pencils and dice. A great game enjoyed by all ages. The aim of the game is to be the first player to draw a complete **beetle**. The body parts you draw are determined by the throw of the dice. The players are in groups of four with a communal die, and the first player to complete their beetle shouts out "Beetle!" stopping the play of all the groups. Then the winner of each particular group (the player with the most complete beetle in that group) will move around to the next table and play starts again. It is all the luck of the throw and can get quite fast and furious at times needing a half time break for refreshments. When all game cards have been played the scores are totted up to reveal the winner who receives a prize. Sometimes a booby prize is given to the player with the least points at the end of the evening.

WIDEGATES GARDEN CLUB

Wednesday April 29th 7-30 ; Gary Long. " Annual Garden Maintenance month by Month"

PARISH NEWS

Dear Resident of Morval Parish Council,

I am writing to invite you to the next Annual Parish Meeting which will be held at 7.00 pm on Wednesday 1st April 2015 at the Widegates Reading Room.

This meeting is an opportunity for residents of the parish to meet the individual members of the parish council and to hear what the council has achieved during the last twelve months. Light refreshments will be available between 6.45 and 7.15pm.

The format for this meeting will be as follows:

7.00pm to 7.20pm – Meet the council

(An opportunity to meet the parish councillors and other members of the community)

7.20pm to 7.30pm – Report from the Chair of the Council

7.30 pm – Parish Council Meeting begins

(All parishioners are welcome to stay for the council meeting)

Regards

Lynne Sutton

Clerk to Morval Parish Council. 01579 326152

TRENODE MESSY CHURCH

The next Messy Church is on Friday 24th April at the usual time of 3.30-5pm at Trenode School. Everyone is welcome for fun, crafting worship and food! Messy Church is free and great creative fun, children who attend the school or live in the local community can come along with their family members. We are going to make some props for an Open the Book play which we will act out at the end of the session! Please contact Helen Priestley for further details Tel 241188 or email hpriestley.78@btinternet.com

ST. WENNA'S CHURCH SERVICES & FLOWER ROTA **CHURCHES TOGETHER**

On Thursday 2nd April there will be a Holy Communion service at St Nicholas at 10am and Tennebrae at Riverside at 7.30pm

On Good Friday 3rd April, a 10am service at St Nicholas will be followed by a Walk of Witness, starting from Cornerstone at 12noon. A service of meditation will be held at St Wenna at 2pm.

SCLERDER ABBEY

The Sclerder Abbey is holding an open day on Sunday April 26th from 10.30am to 4.30pm. The day will include a guided tour of the Abbey as well as refreshments and a light lunch. There will be a number of presentations including Cana for married couples, activities for children and guided prayer. All are welcome. For more information or to contact the abbey call 01503 272238 or visit the website: www.chemin-neuf.org.uk

NOMANSLAND NEWS & EVENTS

Mother and Toddler Group Wednesdays 10-00 to 11-30. Toddlers to supervise their parent/guardian at all times.

Whist every Wednesday 7-30.

SPELL OF CREATION

Aged winter turns to stone
Frost-locked earth, like whitened bone.
Pure as death the earth has slept,
Frozen, formless; secrets kept.
Dark drinks joy and turns to light,
So that harshness becomes bright.

From the ashen cold of past
Rises life, a white flame blast.
Hear the music and the sound,
Beating tabor on the ground.
Unbolt the door, let forth light,
End now sleep and grave-dark night.

Youthful sun has kindled spring,
Green and gold, a marriage ring.
Lords and ladies, gold and green,
Golden king with verdant queen.
Sun, our covenant, our light,
Turns our blindness into sight.

Heather Taylor

CHURCH SERVICES

ALL start at 11am unless otherwise stated.

Date **3rd April**
Good Friday
2pm Meditation
 Flowers Easter Lilies
 - Sue Aunger

Date **3rd May**
 Service Eucharist
 Reader Brian Young
 Sidesperson Ann Williams
 Flowers Maggie Willmott

Date **5th April**
 Service Easter Eucharist
 Reader Helen Priestley
 Sidesperson Val Olver
 Flowers Sue Aunger
 - Easter lilies

Date **10th May**
 Service Family Service
 Reader Helen Priestley
 Sidesperson Anne Rice
 Flowers Julia Tamblyn

Date **12th April**
 Service Family Service
 Reader Mary Howes
 Sidesperson Carolyn Burgoyne
 Flowers Sue Aunger

Date **17th May**
 Service Eucharist
 Reader Mary Howes
 Sidesperson Val Olver
 Flowers Tracy Chudleigh

Date **19th April**
 Service Eucharist followed
 by APCM
 Reader Bridget MacArthur
 Sidesperson Ann Williams
 Flowers Avril Cole

Date **24th May**
 Service Morning Prayer
 Reader Bridget MacArthur
 Sidesperson Carolyn Burgoyne
 Flowers Carolyn Burgoyne

Date **26th April**
 Service Morning Prayer
 Reader Ann Williams
 Sidesperson Anne Rice

Date **31st May**
 Service **St Martin's**
 10.30am
 Flowers Val Olver

Many thanks to everyone who supported our Lent Lunches this year.

The **Annual Parochial Church Meeting** will be held in church following the 11am service on Sunday 19th April.

MORVAL PARISH WEBSITE –

www.morvalwidegates.weebly.com

Morval Parish Council has decided that it no longer wishes to use the Morval Parish website as a means to communicate with parishioners, and would like to explore alternative arrangements in order to do this. In accordance with its wishes, the parish council pages will be removed from the website.

The website continues to provide information about weather, traffic alerts, urgent notices, Morval Church, Messy Church, Jobs, Accommodation, Local Businesses, Widegates Village Hall, Nomansland Village Hall, The Outlook magazine archive, Timetables for buses and trains, the Rubbish/ Recycling dates, links to Trenode School and the Local Police, the posters notice-board of local events, Things to do in and around the parish, Charity work, the Parish in Pictures, and Other Matters. Some of these pages are the direct result of ideas from parishioners, so if there's something you think is missing, email your ideas to the website.

The solar eclipse on 20th March was quite spectacular; if anyone has any images of the day and would like to share them on the website, the contact details are on Website Info, or email webmaster@cvwidegates.freemove.co.uk.

www.morvalwidegates.weebly.com

The Morval Parish website is your parish website, and tries to reflect the things that are, or may be, of interest to residents and visitors about what is happening in the parish. The various sections are:-

The home page. The appearance of significant new items elsewhere in the website, may be flagged here initially. The Home page includes the local weather forecast, which gives a detailed forecast for the next three days, and also forecasts for the next fortnight.

Urgent announcements page. If you urgently need an announcement, just contact the website.

Traffic alerts page. Displays information about the roads of two categories

- details of current or future scheduled works to the roads (as announced by Cornwall Council or by utilities such as South West Water or British Gas), and this covers not only the roads in the parish, but also roads in the surrounding areas
- details of accidents, dangerous road conditions or similar hazards, which parishioners may have contacted the website with the request to us to urgently inform people about.

Be aware page. Advance warning of significant things scheduled to occur in the future.

Parish Organisations webpages. What local organisations are doing, including Morval Church and Morval Parish Council. For sake of clarity and ease of access, the webpages for a given organisation will be kept together in one section of the website.

Local Information pages, such as bus and train timetables, and links to their websites to ensure the timetable information is as up-to-date timetables as possible.

Local accommodation and businesses. Provides links to webpages or websites for local businesses. [To local businesses: if you already have a website, or would like to explore to possibility of having a web presence for your business, please contact the website to discuss this]

Jobs. A listing of jobs that the website has been notified about.

Posters. Copies of community and charity events that are on display on Parish noticeboards.

Things to do. Links to websites regarding what's happening in and around this part of Cornwall.

Charities. Information about local people who are undertaking charity events.

In Pictures. Items of parish interest, in picture form.

Other matters. Anything of interest which doesn't fit in any other category!!

Finally, a good website should be responsive. If you can suggest improvements, please let us know; we'd like our website to be as useful as possible. Contact webmaster@cvwidegates.freemove.co.uk

TRENODE C OF E VA SCHOOL

I would like to update you on a couple of community supported events that we have completed in the past week. After a year of collecting plastic bottles we now have a fantastic eco greenhouse in our allotment garden. Thank you to everyone that gave us some of their empty bottles. Hopefully, this will provide the perfect environment for growing seeds in the coming months.

We have also had our latest textiles collection from Bags 2 School, which is a brilliant recycling idea and provides us with much needed cash to provide extras for the children. Thank you if you dropped off any clothing.

We have had a lot of fun putting together our class assemblies this term. These are opportunities to share with parents what we have been learning about. We have been treated to the Class One doing a weather related fashion show, Class Two telling us about how to train a dragon and the older children sharing their learning about the Vikings and Anglo Saxons in poetry, song, dance and storytelling.

On the sporting front the children remain very active and have participated in a wide range of lessons and competitions, including football, netball and cross country. Next term we look forward to all of the children developing their swimming skills, as well as enjoying athletics and cricket.

Messy Church sessions continue to be much part of our school calendar now. If you are a parent, grandparent or carer and would like to bring your children along to a session they are held each fourth Friday of the month during term time. Everyone welcome!

To find out more about what is happening at school go online and find us at: **www.trenode.cornwall.sch.uk**. Visits for prospective families are also very welcome by appointment please call us on 01503 240235 to arrange a time.

Mrs Lindsay
Headteacher

The **Pet Shop** **Liskeard**

Home
Delivery
Service Available



01579 347144

www.thepetshopliskeard.co.uk

The Pet Shop, Windsor Place, Liskeard, PL14 4BH

Does your child need extra help?



**Maths and English tuition for
KS1 to GCSE.**

FREE ASSESSMENT

**Give your child a brighter
future.**

www.cgtuition.com

BFM House, The Parade, Liskeard 01579 340400

“My family know what I want, so I needn’t bother with a will”

Well, actually, that’s totally irrelevant. If you don’t have a Will, the State has a Will for you, and that Will is named, ‘The Law of Intestacy’. It won’t take account of today’s complex family structures, but it will allow the treasury to take far more tax than is necessary. It does not allow for inflation or the cost of housing, so your spouse or partner could find him/herself in financial hardship, or even homeless in the worst case scenario.

The law of intestacy doesn’t include any charity – so if you wanted to leave a legacy to a particular charity, you really do need to give instructions in a Will. No will – no legacy to charity. It’s as easy as that.

A will can include protection of your home from being sold to pay for care fees, when protective clauses are included in conjunction with Severance of Tenancy; and it can be used to limit the effects of inheritance tax.

By making a will, you can make sure that your property is divided as you want it to be and you can give instructions for your funeral arrangements, which can be a big help to your family at a difficult time.

If you don’t make a Will, the job of sorting out your estate will fall to a close relative who may not be the best person for the job, or who may not want the extra responsibility when already struggling to deal with grief. And, as mentioned, there will be no gift to any charity.

To talk things through, give me a ring to arrange a home visit without obligation.

Have you written a **Will**?

Have you appointed **Lasting Power of Attorney**?

Have you **protected your property** by placing it in a **Trust**?

Do you have a pre-paid **funeral plan**?

Would **equity release** improve your quality of life?

LEGACY
WILL WRITING • TRUSTS • ESTATE PLANNING

Free advice from Philip Head, Legacy Legal Services, Liskeard
in the comfort of your home

call on Freephone: **0800 959 6171** or **07817 990230**

www.LegacyLegalServices.org.uk

AT&I (South West)

Portable Appliance Testing & Inspection

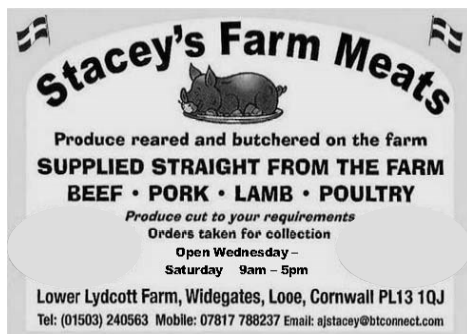
Commercial • Industrial • Residential Homes
Hotels • Guest Houses • B & B • Leisure
Caravan Equipment

01752 851470

C & G Qualified Technicians
Testing & Inspections comply with the
IEE Codes of Practice
www.atisouthwest.co.uk



K9 STYLE
PET GROOMING
Jessica Tamblyn-Hayward
Qualified Pet Groomer
Bray Farm
Bindown
Nomansland, Near Looe
01503 240841 or
07834473835



Stacey's Farm Meats
Produce reared and butchered on the farm
SUPPLIED STRAIGHT FROM THE FARM
BEEF • PORK • LAMB • POULTRY
Produce cut to your requirements
Orders taken for collection
Open Wednesday –
Saturday 9am – 5pm
Lower Lydcott Farm, Widegates, Looe, Cornwall PL13 1QJ
Tel: (01503) 240563 Mobile: 07817 788237 Email: ajstacey@btconnect.com

PIANO TUITION

Beginners to Grade 8
also, Music Theory
Half hour lessons £ 10
Hour lessons £ 20

HEATHER TAYLOR MA

01503 264474

hstaylorofcraigmore@hotmail.com

Metherell Gard

Chartered Accountants and Registered Auditors

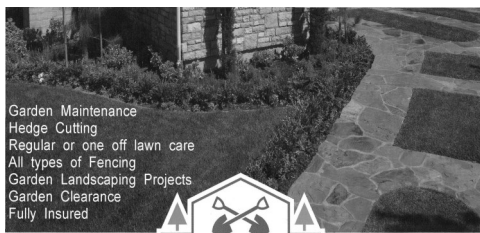
With over 80 years experience Metherell Gard offer confidential and up to date Accountancy and Taxation services specialising in small to medium-sized businesses and individuals. Whether you are a Sole Trader, Partnership, Limited Company, Club or Association we are client focussed and our range of services covers all aspects of accountancy from Business Start Up advice through to Tax Planning.

We pride ourselves in being reliable and approachable. As one of our valued clients, we will provide you with total commitment offering guidance and support to accompany our comprehensive range of services.

Metherell Gard, Morval, Looe, Cornwall, PL13 1PN

t:01503 240940 f: 01503 240950

e: enquiries@metherellgard.co.uk



Garden Maintenance
Hedge Cutting
Regular or one off lawn care
All types of Fencing
Garden Landscaping Projects
Garden Clearance
Fully Insured



DAVID PAGE.

Local to Looe with over 20 years of excellence in

Garden Maintenance & Landscaping.

For a free quote please call David on 01503 269027 or 07833096375

A J P PROPERTY MAINTENANCE

TARMACING, DRAINAGE,
DIGGERWORK, KERBING, STONEWALLING,
FENCING, STEPS
PAINTING, LANDSCAPING, PATIOS,
PATHS, ALSO INSURANCE WORK

HOME 01503 240 125

WORK 07753 42 3962

EMAIL: adrianprout@me.com



**David Ellis BVSc. MRCVS
Veterinary Surgeon**

**4c. Heathlands Road
Liskeard
PL14 4DH**

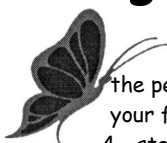
**Phone 01579 342 602
Fax 01579 349568**

Email: davidellis@pensiiple.freesevice.co.uk

Surgery Hours:-

**Mon-Fri
9.00 - 10.00am &
5.00 - 6.00pm
Sat
9.00 - 10.00am**

Wringworthy Cottages



the perfect choice for when
your family and friends visit
4 - star cottages, open all year

www.wringworthy.co.uk email: holidays@wringworthy.co.uk

Wringworthy Cottages, Morval, Looe, Cornwall, PL13 1PR

tel. 01503 240685 fax. 01503 240830

resident owners: MICHAEL & KIM SPENCER

MIKE KENSHOLE

ELECTRICAL

01503 240675

07778 524592

**12 MORVIEW ROAD,
WIDEGATES, LOOE,
CORNWALL. PL13 1QE**

**MIKE@KENSHOLEELECTRIC.CO.UK
WWW.KENSHOLEELECTRIC.CO.UK**



All types of



Domestic & Commercial Work

Additional sockets & Lighting;
PAT Testing;

Heating & Ventilation;

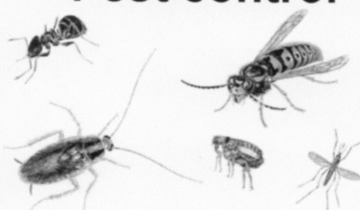
Landlord safety checks

Camping & Caravan Parks



www.pestkilsouthwest.co.uk

Pest control



**PROFESSIONAL CONTROL
OF PESTS - No call out fee**

07896595110

01579320915

BOLVENTOR LAUNCESTON CORNWALL



STOVE SHOP renewables

STOVES - RENEWABLES - HEATING

TEL 01579 345018

7 PIKE ST, LISKEARD, PL14 3JE

WWW.STOVESHOP.CO.UK



SOLARTEC

**Windows &
Conservatories Ltd**

**'A' Rated WINDOWS & DOORS
at BEST PRICES EVER!**



FENSA
REGISTERED

Professionally fitted and finished by us with a
10 year ins. guarantee.
In all colours

NEW

**FACTORY SHOP
SUPPLY ONLY**

For all your windows, doors, conservatories,
fascia, trims, guttering and sealants
**7-10 DAY TURN AROUND ON WINDOWS,
DOORS and CONSERVATORIES**

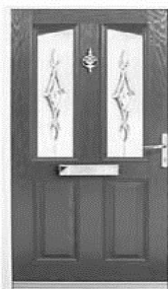
TEL: 01579 343425

FAX: 01579 344500

WEBSITE: www.solartecwindows.co.uk

EMAIL: sales@solartecwindows.co.uk

KEEPING JOBS IN CORNWALL



moore electrical

01503 240298



mooreelectricallooe.co.uk

- Domestic Installations
- Commercial and Agricultural
- Industrial
- Repairs and Rewires
- Portable Appliance Testing
- Electrical Condition Reports
- Fire Alarms and Emergency Lighting
- All work guaranteed and certificated
- Serving the Community since 1990

Tel. 01503 240298
Mobile: 07881 940068

Menhay, Morval, Looe, Cornwall PL13 1PR



Pine Lodge

HOME CARE



'Making the time to care'

We provide a wide range of home care services.
Whilst giving assistance with all aspects of
personal care we are committed to achieving
and maintaining independence.

Telephone: **01503 272016**

Email: **homecare@orchardcare.co.uk**

Website: **www.orchardcare.co.uk**

Pine Lodge Home Care, Restgarth Care Home,
Langreek Lane, Polperro, Looe, Cornwall PL13 2PW

