

# **OUTLOOK**

**NEWS AND VIEWS FROM MORVAL  
AND WIDEGATES**



**November 2014**

Please note that the opinions expressed within this publication are not those of the Parish Church,  
Editors or anyone other than the authors of the articles.

## Useful Contacts

|   |  |               |
|---|--|---------------|
| Priest-in-Charge  | Revd. Philip Sharp   | 263070        |
| Church Wardens  | Mike Willmott  | 240218        |
|   | Val Olver  | 240439        |
| St. Wenna's Organist  | Heather Taylor MA  | 264474        |
| <i>Outlook</i> Editor   | Meriel Kitson  | 240385        |
| The Old Vicarage, Morval, Nr Looe, PL13 1PN                           |  |               |
| meriel@outlookmorval.co.uk  |  |               |
| PCC Secretary and Parish Safeguarding Officer for Children            |  |               |
| &Vulnerable Adults  | Maggie Willmott  | 240218        |
| Bell Tower Captain  | Robin Tamblyn  | 262772        |
| County Councillor   | Jim Candy  | 250376        |
| Parish Council Chair  | Peter Hunt <a href="mailto:hertep@talktalk.net">hertep@talktalk.net</a> ,          | 240303        |
| Parish Clerk  | Lynne Sutton   | 01579 326152  |
| morvalparish@aol.com  |  |               |
| Morval Estate Office  | John Kitson  | 241111        |
| Widegates Hall }  | Caroline Pengelly  |               |
| Reading Room }  | <a href="mailto:carolinejpengelly@sky.com">carolinejpengelly@sky.com</a>           | 240952        |
| Nomansland Village Hall   | Betty Powley   | 240650        |
| Widegates Garden Club   | Marie Bersey   | 240478        |
| Morval Action Group   | Tracy Chudleigh  | 240704        |
| Trenode School & Toddlers   |  | 240235        |
| Liskeard Community Hospital   |  | 01579 335600  |
| NHS Direct (24 hour service)  |  | 111           |
| Police (Non Urgent Calls)   |  | 101           |
| Neighbourhood Team Leader: Sergeant Mick Howe                         |  | 101           |
| PCSO for Morval and Widegates: Steve Cocks                            |  | 101           |
| Dog Watch   | Steve Cocks or   | 0300 1234 212 |
| Morval Parish website   | <a href="http://www.morvalwidegates.weebly.com">www.morvalwidegates.weebly.com</a> |               |
| Trenode School website  | <a href="http://www.trenode.cornwall.sch.uk">www.trenode.cornwall.sch.uk</a>       |               |
| Viridor (report smells that may be associated with the landfill site) |  | 01579 343006  |

## Neighbourhood Watch

|          |        |            |        |          |        |
|----------|--------|------------|--------|----------|--------|
| M Barber | 240309 | M Tamblyn  | 240267 | M Wevell | 240420 |
| M Burt   | 240383 | B Reynolds | 240520 | K Burt   | 240545 |

## ***EDITORIAL***

The colours of the leaves, the smell of bonfires, what does AUTUMN remind you of ? Anyone living in Morval Parish, or a pupil at Trenode School, aged 18 or under is invited to submit a prose or poetic piece, one side of A5 in length or shorter entitled AUTUMN to the Editor of Outlook, by post or e mail. There will be a prize of £30-00 for the best piece which will be published in Outlook, as may some of the other work submitted.

## ***MORVAL NEWS & EVENTS***

The Fun singing evening is up and running(well singing not trotting round Saint Wenna's) Starting with tea biscuits and a bit of a chat, we then enjoy some well known songs together, usually with Key board accompaniment. All are welcome, alternate Wednesday evenings, start time 7-30. Next Gathering 29th October then 12th November.

## ***REMEMBRANCE DAY CONCERT***

Saturday 8<sup>th</sup> November 2014 7:30pm Liskeard Methodist Church. Tickets £5 at the door or available at the Liskeard Tourist Information Centre (under 16s free). Refreshments included.

Hosted by the Liskeard Lady Singers with special guests Polperro Fishermen's Choir and featuring guest instrumentalists Anne Hughes (harpist) and Maggie Willmott (violinist). All proceeds to benefit the Poppy Appeal.

Please do your best to attend this charity event, which is obviously for such a good cause. We want to support all the musicians as much as we can with a good audience, as they are all giving freely of their time.

Contact: Heather Taylor for more details if required.

## ***WORLD WAR ONE REMEMBERED WITH FLOWERS***

(Sponsored by Widegates Garden Club)

At the Widegates Reading Room on the 11th November 2014. from 1pm to 8pm. Please join us on this special day in this special year, meet up with old friends, make new ones, as we come together to remember the of events of a century ago.

Refreshments available. Raffle and Donations in aid of the Royal British Legion

## **PARISH NEWS**

It is actually a relatively quiet period for the council at the moment. Work continues on several matters of course but generally, there is little new news.

The council is awaiting the outcome of its funding submission for having the War Memorial professionally cleaned and some alterations to some spelling mistakes to a couple of the names upon it and the addition of a missing name. The council will agree whether or not to proceed with this work once the outcome of its grant request is known.

The locations identified as potentially suitable for salt bins are being looked at again to ensure that any bins placed meets Cornwall Council requirements.

The "Village Green" in Widegates is still an ongoing matter but currently, the parish council is awaiting some clarification from Cornwall Council about its role and responsibilities should it proceed in accepting the land under a letter agreement arrangement.

By the time that you read this, the council will have considered any grant applications that it has received.

Unfortunately, there appears to have been an incident of illegally tipped waste within the parish. PCSO Cocks has requested that any sightings of unknown vehicles within isolated locations be reported to the Police straight away.

The council will be agreeing its budget for the 2015/16 financial year at its meeting to be held in December.

## **NOMANSLAND NEWS &EVENTS**

**Sunday November 9th** at 6-30 Remembrance service followed by supper.

**Saturday December 6th** at 2-30 Christmas fair with Mince pies and other refreshments.

There will be no Carol service this year.

**Friday 19th December** Christmas Bingo. Doors open at 7pm eyes down at 8pm.

## ***THIS SONG NOW SING***

Hold fast the door, dear Memory, hold fast:  
flood minds with years now spent to dust  
when pain was shirked and grief dismissed,  
speed back to days when men drank life  
outrageously and disregarded falling hours.

Hold fast the door; ignite the flame,  
and quicken pulses at the thought  
of all those burning days in press of war  
and light those ghosts who hover close.

They bought a lie and paid for peace with price too great.  
Sing out for them, they sang their song.  
Reject the thought, what solace can be found in tears?  
This song now sing.

Release the dust of years' decay;  
shrink back the fear, and with their glory song  
trace out the faint white torch of hope  
and hear the bitter tune of peace.  
Sing out for them who sang their lot in faith in youth,  
for Death is blind to age.  
But always, always sing the truth:  
to die for duty is not sweet.  
So now sing out remembering,  
They sang for us.

*Heather Taylor*

## ***CHRISTMAS TREE FESTIVAL***

Following last year's success, St Wenna's church will be hosting another Christmas Tree Festival, starting with an informal dedication service at 4pm on Sunday 7<sup>th</sup> December. The church will be open with refreshments available from 10am – 4pm Monday 8<sup>th</sup> to Saturday 13<sup>th</sup>, after which the trees can remain in church for as long as sponsors would like to leave them. Local organisations and individuals are most welcome to sponsor and decorate a tree, and there will be a special tree for dedications in memory of loved ones. Please get in touch with Val Olver on 240439 if you would like to be involved, either by sponsoring a tree or volunteering to steward the festival.

## ***WIDEGATES NEWS & EVENTS***

Flower arranging every Thursday at 7.30pm

|                               |  |
|-------------------------------|--|
| <b>Saturday 8th November</b>  | Coffee Morning 10am                                |
| <b>Tuesday 11th November</b>  | Flower Festival Afternoon and Evening              |
| <b>Friday 21st November</b>   | Quiz Night 7.30pm                                  |
| <b>Friday 28th November</b>   | Xmas Bingo Eyes Down 7.30pm                        |
| <b>Saturday 29th November</b> | Garden Club Xmas Fayre 2-4pm                       |
| <b>Saturday 6th December</b>  | Cystic Fibrosis Coffee Morning<br>10am - 1pm       |
| <b>Saturday 6th December</b>  | Nativity on the Green and Xmas Lights<br>Switch On |

## ***WIDEGATES GARDEN CLUB***

**Wednesday Nov 26th** 7-30 Floral Art Open evening with Sue Auger, followed by a Christmas party. Sue is a Master of her Craft, anyone who has not seen her talent in action should come.

**Saturday Nov 29th** 2 till 4pm in Widegates Hall/RR Christmas fair, a brilliant event, not to be missed.

## ***REMEMBRANCE DAY SERVICES 2014***

This year's Remembrance Sunday (9<sup>th</sup> November) is of particular significance as 2014 is the Centenary of the Great War. A total of 12 men from Morval Parish made the ultimate sacrifice and laid down their lives in both World Wars, and the acts of remembrance will reflect this.

There will be an extended Act of Remembrance at the Morval War Memorial, and participants should assemble at 10:45am ready for the Act of Remembrance to commence at 10:50am, with our bugler and the Two Minutes Silence timed for 11 o'clock.

Once the Act of Remembrance at the War Memorial has finished, there will be time for those wishing to do so to travel to Morval Church for the Remembrance Sunday Service, which will start at 11:15am.

The Service will again focus on the Centenary, with readings, poetry, music and prayers. After the service, there will be an opportunity to view the display in the church commemorating those who fell in the two World Wars, and tea and coffee will be available for anyone who wishes to spend time reflecting on the events that we are remembering.

# ***CHURCH SERVICES***

ALL start at 11am unless otherwise stated.

**Date**                    **2nd November**  
 Service                Eucharist  
 Reader                Val Olver  
 Sidesperson        Bridget MacArthur  
 Flowers                Vear Pearce

**Date**                    **16th November**  
 Service                Eucharist  
 Reader                Brian Young  
 Sidesperson        Anne Rice  
 Flowers                Janet Gill

**Date**                    **9<sup>th</sup> November**  
 Service                Remembrance:  
                               10.45 War Memorial  
                               11.10 Church  
 Readers                TBA  
 Sidesperson        Carolyn Burgoyne

**Date**                    **23rd November**  
 Service                Morning Prayer  
 Reader                Bridget MacArthur  
 Sidesperson        Mike Willmott

## **NO FLOWERS IN ADVENT**

**Date**                    **30<sup>th</sup> November**  
 10.30am                Joint Benefice Service  
                               St Nicholas

**Date**                    **1st December**  
                               6-00 pm  
                               Christingle with  
                               Trenode School

**Date**                    **7th December**  
 9.30am                Service at St. Nicholas with Bishop Chris.  
 4.00pm                Tree Festival Dedication Service followed by Lanterns and  
                               Carol Singing in the Churchyard

**Date**                    **8th - 14th December**  
                               Christmas Tree Festival open 10-00 am -- 4-00 pm

**Date**                    **14th December**  
 Service                Family Service  
 Reader                Hayley Moore  
 Sides person        Anne Rice

**Date**                    **21st December**  
 4-00pm                Carol Service  
 Readers                T.B.A  
 Sides person        Churchwardens

**Date**                    **25th December**  
 Service                Christmas Day  
                               Eucharist  
 Readers                T.B.A.  
 Sides persons        Churchwardens  
 Flowers                Carol Jay

**Date**                    **28th December**  
 Service                Morning Prayer  
 Reader                T.B.A.

## ***TRENODE C OF E VA SCHOOL***

We are delighted to be able celebrate the success of some of our young readers. Talitha, Olivia, Benjamin, Ellen, Grace, Matilda, Lily P, Sophie P and Lily R all gained a medal and certificate for completing the Summer Reading Challenge at Liskeard Library. This is fantastic and we were delighted that Mrs Foote, a Liskeard librarian, was able to join us in assembly to announce the good news.

The children have enjoyed learning songs from “Easy Peasy Harvest” for our Harvest Festival this term. It is a joy to celebrate with the children the riches of nature.

Thank you to everyone that dropped off clothing for us to recycle. We raised a staggering £270.

If you have collected any Morrisons vouchers and were wondering what to do with them you can drop them in to school. In the past few years we have used vouchers to “buy” seeds, tools and raised beds for our edible garden. We are also still collecting empty 2 litre lemonade bottles from which we will be building an eco green house. We are nearing our total of 1000, but still need a few more!

We will be holding our annual Foundation Stage Open Afternoon on Wednesday 19<sup>th</sup> November at 2.00pm. This is an opportunity for families of children that are due to start school next autumn (September 2015) to come find out what we have to offer. If you know anyone with a child of this age please let them know so that they can come along and join in the fun.

As we look forward to Christmas there are a number of events to which you are very welcome. Christingle will be held at St Wenna’s church on Monday 1<sup>st</sup> December. The younger children will be performing their Nativity Play on Thursday 4<sup>th</sup> and Friday 5<sup>th</sup> December at 9.30am, whilst the older children will be leading the school performance on Tuesday 16<sup>th</sup> and Wednesday 17<sup>th</sup> December at 2.00pm and 6.00pm. Tickets will be available from the School Office.

The PTFA are also arranging a couple of events to which you are also most welcome. Eyes down for a Bingo session on Friday 14<sup>TH</sup> November with lots of excellent prizes. Then on Friday 5<sup>th</sup> December we will be holding our Christmas Fair. Come along and buy some Christmas treats.

To find out more about what is happening at school go online and find us at : [www.trenode.cornwall.sch.uk](http://www.trenode.cornwall.sch.uk).

Mrs Lindsay. Headteacher



## ***CHURCHES TOGETHER*** (Looe & District - Morval)

On the 8th October the AGM was held at Pelynt Methodist Chapel. New members were elected with Revd Andrew Hill (Riverside Methodist Church, West Looe) elected as the Chair replacing Rosie Woodcock. Great appreciation was noted for all Rosie's hard work and contribution to Churches Together over previous years. The calendar for the coming year was discussed and up and coming dates are as follows:

**Sun 26th October 4pm** - Healing & Wholeness Service, St Marnarch's Church, Lanreath.

**Sun Nov 16th November** from 2.30pm - Churches Together display, St John's Methodist Church, Bodmin Rd, St Austell part of 'One Year On' gathering 1 yr on from signing of 'The Declaration of Intent'. All Christians are invited throughout Cornwall to come, participate in workshops and hear from Church Leaders the progress that has been made. Officially starts at 3pm and after tea together at 6pm there will be a closing act of ecumenical worship. To book a place please contact David Smith 01726 719432 or email [ses.dhs@hotmail.co.uk](mailto:ses.dhs@hotmail.co.uk).

The next Churches Together meeting is planned for 15th Jan 2015 7pm at Polperro Methodist Church. If you want to become involved in Churches Together work please contact Helen Priestley Tel 241188.

## ***TRENODE MESSY CHURCH***

The children at the October Messy Church learnt about Remembrance Sunday and remembering loved ones with poppies and prayer dice made. The next Messy Church is on Friday 28th November at 3.30pm in the school hall and all families within the community and of those attending the school are welcome. It is for the whole family to participate in and join in. As usual there will be hotdogs for all and the session will obviously have a very festive theme with children learning about Advent and what it means. Please contact Helen Priestley for more details Tel 241188 email [hpriestley.78@btinternet.com](mailto:hpriestley.78@btinternet.com).

***"We have already written our Wills, leaving everything to one another and then to the children when we've both gone ...".***

- sounds familiar, doesn't it!

... but your children could end up with very little, irrespective of your worth today. The principle reason is that one or both of you could need residential care at some stage in your life, whether it's owing to an accident, say a car crash that leaves you physically or mentally incapable, or just through old age and not being able to manage.

Once upon a time this would not have been a problem because we relied upon the NHS or local authority to provide for our care. After all, we've paid our taxes and contributed to the National Insurance fund — but it doesn't work that way any more!

The Government does provide a safety net — if you have very few assets; but if you have assets over certain limits you will be expected to meet all your own care costs, and these can vary from £500 to £800 per week or more. It doesn't take long to spend thousands of pounds in this way.

Do you want to be absolutely certain the assets you have worked hard to acquire during your lifetime will provide for those you love when you've gone? If so, you need to protect them now, and not rely on your Will, which takes effect at the time of death, and in many cases is too late to protect assets from the challenges we face during life.

No two situations or circumstances are the same, so getting some free advice is a positive step in the right direction!

Have you written a **Will**?

Have you appointed **Lasting Power of Attorney**?

Have you **protected your property** by placing it in a **Trust**?

Do you have a pre-paid **funeral plan**?

Would **equity release** improve your quality of life?

**LEGACY**  
WILL WRITING • TRUSTS • ESTATE PLANNING

Free advice from Philip Head, Legacy Legal Services, Liskeard  
in the comfort of your home

call on Freephone: **0800 959 6171** or **07817 990230**

[www.LegacyLegalServices.org.uk](http://www.LegacyLegalServices.org.uk)

# The **Pet Shop** **Liskeard**

Home  
Delivery  
Service Available



**01579 347144**

**[www.thepetshopliskeard.co.uk](http://www.thepetshopliskeard.co.uk)**

**The Pet Shop, Windsor Place, Liskeard, PL14 4BH**

**Does your child need extra help?**



**Maths and English tuition for  
KS1 to GCSE.**

**FREE ASSESSMENT**

**Give your child a brighter  
future.**

**[www.cgtuition.com](http://www.cgtuition.com)**

**BFM House, The Parade, Liskeard 01579 340400**

### ***TWELL'S ORIGINAL VERSION***

When as a child I laughed and wept, Time crept.  
When as a youth I waxed more bold, Time *strolled*.  
When I became a full grown man, Time RAN.  
When older still I daily grew, Time **FLEW**.  
Soon I shall find, in passing on, Time *gone*.  
O Christ! wilt Thou have saved me then?  
Amen.

### ***PENTREATH'S AMENDED VERSION***

When I was a babe and wept and slept, Time crept;  
When I was a boy and laughed and talked, Time walked.  
Then when the years saw me a man, Time ran.  
But as I older grew, Time flew.  
Soon, as I journey on, I'll find time gone.  
May Christ have saved my soul, by then,  
Amen.



STOVE SHOP  
renewables

STOVES - RENEWABLES - HEATING  
TEL 01579 345018  
7 PIKE ST, LISKEARD, PL14 3JE  
WWW.STOVESHOP.CO.UK

**AT&I** (South West)

**Portable Appliance Testing & Inspection**

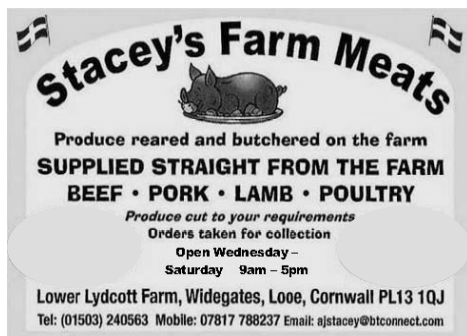
Commercial • Industrial • Residential Homes  
Hotels • Guest Houses • B & B • Leisure  
Caravan Equipment

**01752 851470**

C & G Qualified Technicians  
Testing & Inspections comply with the  
IEE Codes of Practice  
[www.atisouthwest.co.uk](http://www.atisouthwest.co.uk)



**K9 STYLE**  
PET GROOMING  
Jessica Tamblyn-Hayward  
Qualified Pet Groomer  
Bray Farm  
Bindown  
Nomansland, Near Looe  
01503 240841 or  
07834473835



**Stacey's Farm Meats**  
Produce reared and butchered on the farm  
**SUPPLIED STRAIGHT FROM THE FARM**  
**BEEF • PORK • LAMB • POULTRY**  
Produce cut to your requirements  
Orders taken for collection  
Open Wednesday –  
Saturday 9am – 5pm  
Lower Lydcott Farm, Widegates, Looe, Cornwall PL13 1QJ  
Tel: (01503) 240563 Mobile: 07817 788237 Email: [ajstacey@btconnect.com](mailto:ajstacey@btconnect.com)

## **PIANO TUITION**

**Beginners to Grade 8**  
**also, Music Theory**  
**Half hour lessons £ 10**  
**Hour lessons £ 20**

**HEATHER TAYLOR MA**

**01503 264474**

[hstaylorofcraigmore@hotmail.com](mailto:hstaylorofcraigmore@hotmail.com)



**Metherell Gard**  
Chartered Accountants and Registered Auditors

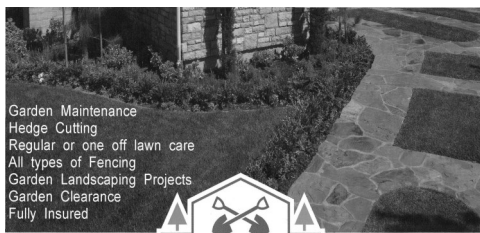
With over 80 years experience Metherell Gard offer confidential and up to date Accountancy and Taxation services specialising in small to medium-sized businesses and individuals. Whether you are a Sole Trader, Partnership, Limited Company, Club or Association we are client focussed and our range of services covers all aspects of accountancy from Business Start Up advice through to Tax Planning.

We pride ourselves in being reliable and approachable. As one of our valued clients, we will provide you with total commitment offering guidance and support to accompany our comprehensive range of services.

Metherell Gard, Morval, Looe, Cornwall, PL13 1PN

t:01503 240940 f: 01503 240950

e: [enquiries@metherellgard.co.uk](mailto:enquiries@metherellgard.co.uk)



Garden Maintenance  
Hedge Cutting  
Regular or one off lawn care  
All types of Fencing  
Garden Landscaping Projects  
Garden Clearance  
Fully Insured

DAVID PAGE.

Local to Looe with over 20 years of excellence in

Garden Maintenance & Landscaping.

For a free quote please call David on 01503 269027 or 07833096375

## A J P PROPERTY MAINTENANCE

TARMACING, DRAINAGE,  
DIGGERWORK, KERBING, STONEWALLING,  
FENCING, STEPS  
PAINTING, LANDSCAPING, PATIOS,  
PATHS, ALSO INSURANCE WORK

HOME 01503 240 125

WORK 07753 42 3962

EMAIL: [adrianprout@me.com](mailto:adrianprout@me.com)



**David Ellis BVSc. MRCVS  
Veterinary Surgeon**

**4c. Heathlands Road  
Liskeard  
PL14 4DH**

**Phone 01579 342 602  
Fax 01579 349568**

**Email: [davidellis@pensiiple.freesevice.co.uk](mailto:davidellis@pensiiple.freesevice.co.uk)**

**Surgery Hours:-**

**Mon-Fri  
9.00 - 10.00am &  
5.00 - 6.00pm  
Sat  
9.00 - 10.00am**

## Wringworthy Cottages



the perfect choice for when  
your family and friends visit  
4 - star cottages, open all year

[www.wringworthy.co.uk](http://www.wringworthy.co.uk) email: [holidays@wringworthy.co.uk](mailto:holidays@wringworthy.co.uk)

Wringworthy Cottages, Morval, Looe, Cornwall, PL13 1PR

tel. 01503 240685 fax. 01503 240830

resident owners: MICHAEL & KIM SPENCER

## MIKE KENSHOLE

### ELECTRICAL

**01503 240675**

**07778 524592**

**12 MORVIEW ROAD,  
WIDEGATES, LOOE,  
CORNWALL. PL13 1QE**

**MIKE@KENSHOLEELECTRIC.CO.UK  
WWW.KENSHOLEELECTRIC.CO.UK**



All types of



Domestic & Commercial Work

Additional sockets & Lighting;  
PAT Testing;

Heating & Ventilation;

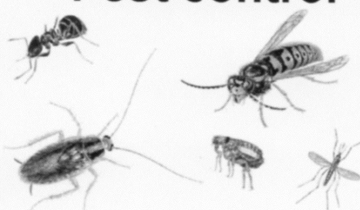
Landlord safety checks

Camping & Caravan Parks



[www.pestkilsouthwest.co.uk](http://www.pestkilsouthwest.co.uk)

## Pest control



**PROFESSIONAL CONTROL  
OF PESTS - No call out fee**

**07896595110**

**01579320915**

BOLVENTOR LAUNCESTON CORNWALL



## ***DOWN-ENDE HOUSE***

Exclusive Dining Venue – AA Four Star B&B Accommodation

We are delighted to specialize in smaller functions catering for a range of events including:

- Family celebrations
- Birthdays and Wakes
- Working lunches
- Anniversaries, Christenings
- Business breakfast meetings
- Bookings for Christmas now being taken

Special diet catered for \* Wheelchair accessible \* Car park with off road parking

Our conservatory dining room extends our present dining room and can be used for private dining for parties. We will be delighted to handle all arrangements, compose menus and suggest wines to make your occasion special.

- Each event tailored to your needs personally organized
- Excellent local produce prepared in house
- With an emphasis on friendly service and superb value for money

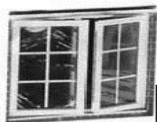
Widegates, Nr Looe, Cornwall, PL13 1QN – Tel 01503 240 213  
[www.downende.com](http://www.downende.com)



# **SOLARTEC**

## **Windows & Conservatories Ltd**

**'A' Rated WINDOWS & DOORS  
at BEST PRICES EVER!**



FENSA  
REGISTERED

Professionally fitted and finished by us with a  
**10 year ins. guarantee.**  
In all colours

**NEW**

### **FACTORY SHOP SUPPLY ONLY**

For all your windows, doors, conservatories,  
fascia, trims, guttering and sealants  
**7-10 DAY TURN AROUND ON WINDOWS,  
DOORS and CONSERVATORIES**

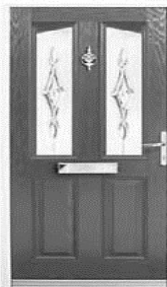
**TEL: 01579 343425**

**FAX: 01579 344500**

WEBSITE: [www.solartecwindows.co.uk](http://www.solartecwindows.co.uk)

EMAIL: [sales@solartecwindows.co.uk](mailto:sales@solartecwindows.co.uk)

**KEEPING JOBS IN CORNWALL**



# moore electrical

**01503 240298**



mooreelectricallooe.co.uk

- Domestic Installations
- Commercial and Agricultural
- Industrial
- Repairs and Rewires
- Portable Appliance Testing
- Electrical Condition Reports
- Fire Alarms and Emergency Lighting
- All work guaranteed and certificated
- Serving the Community since 1990

Tel. 01503 240298  
Mobile: 07881 940068

Menhay, Morval, Looe, Cornwall PL13 1PR



## Pine Lodge

HOME CARE



*'Making the time to care'*

We provide a wide range of home care services.  
Whilst giving assistance with all aspects of  
personal care we are committed to achieving  
and maintaining independence.

Telephone: **01503 272016**

Email: **homecare@orchardcare.co.uk**

Website: **www.orchardcare.co.uk**

Pine Lodge Home Care, Restgarth Care Home,  
Langreek Lane, Polperro, Looe, Cornwall PL13 2PW

