

# **OUTLOOK**

**NEWS AND VIEWS FROM MORVAL  
AND WIDEGATES**



**September 2014**

Please note that the opinions expressed within this publication are not those of the Parish Church,  
Editors or anyone other than the authors of the articles.

## Useful Contacts

Priest-in-Charge	Rev. Philip Sharp	263070
Readers	Rosie Woodcock	265482
	John Potter	264986
Church Wardens	Mike Willmott	240218
	Val Olver	240439
St. Wenna's Organist	Heather Taylor MA	264474
Outlook Editor	Meriel Kitson	240385
The Old Vicarage, Morval, Nr Looe, PL13 1PN		
meriel@outlookmorval.co.uk		
PCC Secretary and Parish Safeguarding Officer for Children		
&Vulnerable Adults	Maggie Willmott	240218
Bell Tower Captain	Robin Tamblyn	262772
County Councillor	Jim Candy	250376
Parish Council Chair	Peter Hunt <a href="mailto:hertep@talktalk.net">hertep@talktalk.net</a> ,	240303
Parish Clerk	Lynne Sutton	01579 326152
morvalparish@aol.com		
Morval Estate Office	John Kitson	241111
Widegates Hall }	Caroline Pengelly	
Reading Room }	<a href="mailto:carolinejpengelly@sky.com">carolinejpengelly@sky.com</a>	240952
Nomansland Village Hall	Betty Powley	240650
Widegates Garden Club	Marie Bersey	240478
Morval Action Group	Tracy Chudleigh	240704
Trenode School & Toddlers		240235
Liskeard Community Hospital		01579 335600
NHS Direct (24 hour service)		111
Police (Non Urgent Calls)		101
Neighbourhood Team Leader: Sergeant Mick Howe		101
PCSO for Morval and Widegates: Steve Cocks		101
Dog Watch	Steve Cocks or 0300 1234 212	
Morval Parish website	<a href="http://www.morvalwidegates.weebly.com">www.morvalwidegates.weebly.com</a>	
Trenode School website	<a href="http://www.trenode.cornwall.sch.uk">www.trenode.cornwall.sch.uk</a>	
Viridor (report smells that may be associated with the landfill site) 01579 343006		

## Neighbourhood Watch

M Barber	240309	M Tamblyn	240267	M Wevell	240420
M Burt	240383	B Reynolds	240520	K Burt	240545

## **MORVAL NEWS & EVENTS**

**Rotary Charity Variety Show** will take place in the Guild Hall Plymouth on Friday 24 October at 7pm featuring Top comedian and Compere Tank Sherman. The Military Wives Choir. Harpist Elizebeth Jane Baldrey. Java 5. The City of Plymouth Pipe Band. International Male Vocalist Shaun Perry and The Torpoint Rotary Young Singers and Dancers. A coach is running and picking up at Widegates at 5-25 pm. The combined coach and ticket price is £17.

For tickets information and to book a place on the coach ring John on 01503 240101

**Kathy and Wendy** are having a coffee Day for Macmillan Nurses, on Friday 26th September 10am to 4pm. At 2, Torwell Cottage Tregarland, all welcome

## **NOMANSLAND NEWS & EVENTS**

The August Show was again a great success. Thanks to all the organisers competitors and admirers who together combined to create such a splendid and enjoyable event. The raffle raised a considerable amount of money for the hall, The Duke of Cornwall's hamper being much coveted. Harvest festival will be on Sunday 28th Sept at the new time of 3pm, with auction and tea to follow. On Saturday October 25th there will be a jumble sale in aid of the Cornwall Children's Hospice.

Whist every Wednesday at 7-30pm

## **MORVAL PARISH FAIR SUNDAY 27<sup>TH</sup> JULY 2014**

The Friends of St Wenna's would like to thank everyone for their support in making Morval Parish Summer Fair a great success. The event was well attended and a lovely day was had by all, old and young. It was nice to see many familiar faces and some new ones too. We'd also like to thank everyone who helped organise the fair, set up marquees and equipment, man the barbeque, serve teas, coffees etc, stallholders, musicians, raffle and childrens tent. Without them, this event would not have taken place. We are grateful also to Metherell Gard for the use of their land, and Robin Tamblyn for providing the car park. And finally a special thanks to Revis Crowle, for opening the fair and for her brilliant fun run.

## **PARISH NEWS**

The usual monthly meetings for the parish council resumed with the first being held on the 3rd September.

Although this has been a relatively quiet period for the council, it continues working towards positive outcomes for a number of matters and continues to investigate potential projects that might be undertaken.

The council will be considering any grant requests received as part of its meeting in November. Any organisation wishing to apply for a grant can request a grants application form and a copy of the Grants Policy from the clerk.

I would like to take this opportunity while there is little news to report, to remind people that they are very welcome to attend parish council meetings held on the first Wednesday of each month except if this is a Bank Holiday when the meeting would be held the following Wednesday. In addition, so as not to clash with any Firework displays, the meeting in November will be held on the 12th. The meetings begin at 7.00pm and are held at the Reading Room in Widegates. Anybody wishing to receive meeting agendas, approved minutes and information received that may be of interest can be included on the email list that I keep for this purpose. Please let me know if you wish to be included.

I will be on annual leave during the period of the 15th to the 19th September inclusive. If you need to contact me during this time please do not be disappointed if I do not respond promptly. Any emergencies should be communicated directly to a councillor during this period. Individual councillor contact details can be found either on the parish councils pages of the parish web site or on Cornwall Council's web site.

***Lynne Sutton***

Clerk to Morval Parish Council

## **EVENING IN SEPTEMBER**

There is a silence to the slackening day.  
This silence, made of the still-warm tower's stone  
and sheep-bitten turf and the tremor of the nearby trees,  
of the clouds, sparse and low, in the bright pale sky  
and the wild geese homeward flying, shows  
how life unwinds, outside of time.

A half-hidden pheasant, announcing the dusk,  
invades the silence and the hour,  
and then subsides. There is silence.  
Silence, like the tower and the shadows  
coalescing at the heavy wood door.  
Silence, like the belfry and the music  
suspended within.

Crunch of leather on the gravel path  
and, between the ancestral half-forgotten plots,  
six of one parish in single file tread,  
followed by an obedient four-legged friend,  
all ready to defy the silence of the waning day.

A few words are spoken about the clock  
which swings a ceaseless pendulum  
to keep the seconds, as it has done  
since the turn of the millennium;  
though time stands still within the tower,  
each hand frozen from cold and age,  
held in place at half past eight.

*continued on page 6.....*

## **EVENING IN SEPTEMBER** *continued*

Each rope is taken up in hand  
and coiled up beneath the wasp;  
six waiting, patient, for the word  
to command the demon overhead.  
All is quiet. There is no sound,  
save for the lonely sheepdog at the door.  
All six wait, all six are ready – then,  
“Going ... gone!” says treble and, one by one,  
down swing six arms, and down, and down,  
to ring up the bells the Cornish way.  
By degrees six Furies, deep and low,  
flings out to greet the closing of the day:  
joyful treble sings beneath the beating wings  
of red-lapelled swallows as they lightly skim,  
and profound tenor’s insistent tone  
punctuates the changelessness of stone.

Silence defied and time unspun  
as interrupted octaves rise to flood  
the swimming tower, which has held  
the half-crazed, half-sinful Christian mirth  
in generations gone and those to come,  
spurning the deep universal hush  
and insisting that the spirit sing.

The sheepdog waits quietly at the door.

***Heather Taylor***

## ***CHURCH SERVICES***

ALL start at 11am unless otherwise stated.

<b>Date</b>	<b>7th September</b>	<b>Date</b>	<b>21st September</b>
Service	Lammas Service 4pm	Service	Eucharist
Reader	Maggie Willmott	Reader	Brian Young
Sidesperson	Ann Williams	Sidesperson	Val Olver
Flowers	Ann Rice	Flowers	Sue Williams
<b>Date</b>	<b>14th September</b>	<b>Date</b>	<b>28th September</b>
Service	Family	Service	Morning Prayer
Reader	Helen Priestly	Reader	Bridget MacArthur
Sidesperson	Hayley Moore	Sidesperson	Carolynne Burgoyne
Flowers	Ann Rice	Flowers	Sue Williams
<b>Date</b>	<b>5th October</b>	<b>Date</b>	<b>20th October</b>
Service	Eucharist	Trenode School Harvest Service	
Reader	Hayley Moore	at 6.30pm. Followed by Supper	
Sidesperson	Val Olver	and Auction	
Flowers	Anne Williams		
<b>Date</b>	<b>12th October</b>	<b>Date</b>	<b>27th October</b>
Service	Family Service	Service	Morning Prayer
Reader	Helen Priestly	Reader	Bridget MacArthur
Sidesperson	Bridget MacArthur	Sidesperson	Val Olver
Flowers	Maggie Willmott	Flowers	Tracy Chudleigh
<b>Date</b>	<b>19th October</b>		
Service	Eucharist with Celtic Harvest Festival		
Reader	Carolynne Burgoyne		
Sidesperson	Brian Young		
Flowers	Meriel Kitson		

Please note that the list with the Bible readings on it will be given to the above people individually and will also be pinned up in the Porch of the church. Thank you for reading and being sidesperson. If you need to change your date or have any queries, please contact Val Olver: 01503-240439. Any problems with flower rota contact Sue Aunger 01503 241 063. We have an enthusiastic team for brass and church cleaning at St Wenna. Any one wishing to join us we will be there 2nd Tuesday in the month at 10-00am. Refreshments provided. Contact Val Olver 01503 240439

## **HARVEST FESTIVAL AT ST WENNA'S CHURCH**

Following the success of last year's Celtic Harvest Festival, we are planning another whole weekend of events, but with a new focus. This year, we want to celebrate our local farms and farmers, so we are hoping to fill the church with displays from farms in and around the parish. There will be concerts on Friday 17<sup>th</sup> and Saturday 18<sup>th</sup> October, a Harvest Communion Service on Sunday 19<sup>th</sup>, and the main Harvest Festival Service, led as usual by Trenode School, on Monday 20<sup>th</sup>, followed by supper and auction of produce. All contributions of food for the supper and produce for the auction will be most gratefully received. More details to follow next month.

If you are a farmer and you have not heard from us, this is not because we have deliberately left you out, so please get in touch with Maggie Willmott on 01503 240218 or email [willmott@cvwidegates.freeserve.co.uk](mailto:willmott@cvwidegates.freeserve.co.uk) for details (and an apology!)

## **MESSY CHURCH**

The first Messy Church of this new term is on Friday 26th Sept at the usual time of 330pm at Trenode School. All children and their families are welcome - come and enjoy crafts, song and story around a bible theme. We will also be doing a short play using our new Open the Book material which we have purchased with Messy Church funding. Please contact Helen Priestley for further details Tel 241188. (Please note - if you are unable to be with your child from the start of the session please contact Helen or arrange for them to be with another adult).

## **CHURCHES TOGETHER (Looe & District (Morval))**

**Sunday 7th September 2014 @ 4pm**

Lammas Service, St. Wenna's, Morval.

**Wednesday 8th October 2014 @ 7pm**

AGM @ Pelynt Methodist Chapel. All welcome.

Ring Rosie Woodcock for details 01503-265482



## **THE MORVAL PARISH NEIGHBOURHOOD PLAN**

The Neighbourhood Plan gives members of Morval Parish the chance to have a say in how their community is developed and how it will look in the future. It can protect green spaces and places of historic interest whilst also helping the community to provide local employment opportunities, control the amount and the type of residential and commercial building and improve leisure facilities. It is not about stopping all development but it is about giving people a say in where (and how) they would prefer to see development happen.

The Plan relies on the support and the views of people in the parish and as a first step in gathering those views, for input to the Plan, a short questionnaire was included in the last issue of the 'Outlook' parish newsletter.

Many thanks to all those members of the parish who completed the questionnaire that was included in the July/August issue of Outlook. To give a taste of how parishioners have responded so far, here is some feedback from completed questionnaires. The Neighbourhood Community Group will be using these responses when they next meet to develop the Plan. However, it is not too late to complete a questionnaire; the Group will be including all comments submitted **before the end of September 2014**, if you have anything to add.

**Question: What are your thoughts on Housing Development in our Parish?**

**41%** of respondents said that it was very important that future housing development should only consist of 'in-fill', within the existing boundaries of the villages in the Parish and **25%** said that housing development should be of an 'affordable/social housing' nature (with the provision of supporting facilities). A smaller number (**9%**) said that only a very low number of houses should be built (in order to maintain the parish's rural nature) and also that the 'pupil size' of the parish school should be an important consideration before any future housing is planned. A further **9%** of respondents said that that they did not mind what type of housing was built in the future so long as it was sympathetic to the current environment of the parish. **13%** of respondents did not answer this question and **3%** said that they needed more information before they could answer the question.

## **THE MORVAL PARISH NEIGHBOURHOOD PLAN CONTINUED**

**Question: Should we use land to create opportunities for employment?**

92% of respondents said 'yes' we should, whilst a further 8% didn't answer.

**Question: Should we use land to create opportunities for economic growth?**

76% of respondents said 'yes' we should, 8% said 'no' and 16% did not answer this question.

**Question: Do you want leisure facilities built on land in the Parish?**

72% said 'yes', 25% said 'no' and 3% didn't answer.

**Question: If yes, what sort?**

The 2 most popular responses were a children's playpark and football/cricket/tennis facilities. Less popular were properly signed footpaths, a public park and a swimming pool.

**Question: Would you like to see more businesses in the Parish?**

96% said 'yes' and 4% said 'no'.

Of those who said 'yes', the most popular responses asked for a post office/shop and NHS facilities in Widegates with a smaller (but still significant number) asking for a post office/shop in Morval and NHS facilities in both Morval and No-Man's-Land. Provision of a Public House(s) in Widegates and Morval were also popular, whilst a much smaller number asked for fast food/restaurants to be provided in Widegates (only).

**Question: What about our roads? Should we use land to improve them?**

75% said 'yes' we should, 17% said 'no' and 8% didn't answer this question.

## **THE MORVAL PARISH NEIGHBOURHOOD PLAN CONTINUED**

Of those who said ‘yes’, the most popular improvements were between Widegates and Morval (along the A387), around Trenode School (both outside the school and properly provisioned parking facilities adjacent to the school) and along the lane that passes between No-Man’s-Land and the intersection with the A387.

Among those people who said ‘no’, half of them said that we should use land to improve footpaths and cycleways (not roads) whilst the other half did not express any opinion as to what should be considered instead.

**Question: Are there any buildings that are of historic significance to you?**

**43%** said ‘yes’ (St Wenna’s Church, Widegates Chapel, Trenode School and the Estate Houses being mentioned), **33%** said ‘no’ and **24%** did not give an answer.

**Question: Do you want all new buildings in the Parish to be designed in a particular way or have any restrictions?**

**67%** said ‘yes’, **16%** said ‘no’ and **17%** did not answer this question.

Of those who said ‘yes’, **61%** said that they would like all new buildings to be ‘sensitive’ to the environment of the parish (in particular to the types of buildings that we already have). Of the remainder, **20%** said that it was important that new buildings be designed/built to have a ‘low carbon footprint’/to be ‘Eco-friendly’ whilst **19%** said ‘affordability’ (particularly on ‘local’ wages) was an important consideration.

*(All most finished now, for those who are ‘flagging!’)*

**Question: Is the following good enough in your area:**

**Internet Connection** – **33%** said ‘yes’ all the remainder said ‘no’.

**Mobile Phone Signal** – Again **33%** said yes and all the remainder said ‘no’.

## **THE MORVAL PARISH NEIGHBOURHOOD PLAN CONTINUED**

**Question: What other areas would you like the Neighbourhood Plan to explore?**

Suggestions were; speeding through Widegates, provision of speedbumps and other 'traffic calming measures, upgrading the Widegates 'Reading Room', provision of allotments (and possibly a 'community garden'), provision of a footpath between Widegates and the Tredinnick Farm Shop, the poor condition of roads in the parish, securing the future of the Widegates 'village green', the St Wenna's Church 'community outreach re-ordering project', adequate provision at Trenode and possible educational opportunities elsewhere in the parish, and the severe lack of parking adjacent to Trenode School.

*(and finally ...)*

**Any other matters of concern to you, please list below**

Responses to this request were; the conditions of the parish roads, speed limits within the parish's areas of habitation, street lighting on the main roads and the enforcement of community enhancement projects (for example, the provision of footpaths) that are part and parcel of a developer's planning approval at the time of the development (and not at some vague time in the future) and to a 'quality' standard.

---

## **WIDEGATES GARDEN CLUB**

September 13th    Autumn plant sale Widegates Village Hall /RR  
September 24th    7-30 lecture in Hall/RR Flowers for Oct & Nov by Mike Stevens.

## **TRENODE C OF E VA SCHOOL**

Term starts on Monday September 8th.

September heralds the start of a new school year and there is always great excitement about the new things that it brings. This year we embrace a new National Curriculum, the first in over 25 years. We also welcome new children and staff, as well as their families, to our school community. Some children will be starting school for the first time; others will be transferring from other schools. We are delighted that they will become part of the “Trenode family” and we wish them many happy years of working with us.

We also look forward to our traditional Autumn events and an opportunity to celebrate the passing of the seasons. In the first half of term there will be our Harvest Festival at St Wenna’s and then later on in the term Christingle and our Christmas celebrations. More details to follow.

I am delighted to thank the Parents, Teachers and Friends Association (PTFA) and wider community for their outstanding support last year. An amazing £3,500 was raised through various events through the year. This money will provide the children with additional resources. For a school of our size this amount is tremendous and is only possible because of the generous support of the parents and wider community. Thank you. If you would like to become a member of the PTFA – all welcome, please contact the School Office.

Don’t forget we are still collecting clothing, 2 litre plastic bottles, empty printer cartridges and old mobile phones! These can also be dropped off at the School Office.

If you would like to find out more about school life we would be delighted to welcome you. Please contact us on 01503 240235 to arrange an appointment. Alternatively you might like to follow what we are doing on the school website <http://www.trenode.cornwall.sch.uk>.

***Mrs Lindsay.***

Headteacher

## **WIDEGATES HALL**

Events for September/October :

- |                         |  |
|-------------------------|--|
| Saturday 6th September  | - Village Hall Fete on the Green 2pm             |
| Saturday 13th September | - Garden Club Autumn Plant Sale 10am til 12 noon |
| Friday 26th September   | - Bingo 7.30pm                                   |
| Saturday 4th October    | - Garden Club Beetle Drive 2 til 4pm             |
| Friday 31st October     | - Bingo 7.30pm                                   |

## **TRENODE SCHOOL**

Bag 2 School PTFA are asking for good quality second hand clothes shoes and bags. Please drop at Trenode School gate or phone Victoria Kitson on 01503240845. Next collection is 22nd September.

## **WIT AND WISDOM**

**Headteacher to pupil:-**

“Everyone has a purpose in life and I suppose yours is to be an awful warning to others.”

**Commonsense** is very rare. *“Voltaire”*

**Wisdom** is the anticipation of consequence.

Read and forget,  
See and remember,  
Do and understand.

We read to Know we're not alone.

# The **Pet Shop** **Liskeard**

Home  
Delivery  
Service Available



**01579 347144**

**[www.thepetshopliskeard.co.uk](http://www.thepetshopliskeard.co.uk)**

**The Pet Shop, Windsor Place, Liskeard, PL14 4BH**

**Does your child need extra help?**



**Maths and English tuition for  
KS1 to GCSE.**

**FREE ASSESSMENT**

**Give your child a brighter  
future.**

**[www.cgtuition.com](http://www.cgtuition.com)**

**BFM House, The Parade, Liskeard 01579 340400**

21<sup>st</sup> C Kenning.

August 2013

Your guess

Spanish Sun,  
Furry tum.

Luggage checker,  
Bomb detector.

Amber eyes,  
Chases flies.

Mood reflector,  
Loyal protector.

The logo for Stove Shop Renewables features the text "STOVE SHOP" in a serif font above the word "renewables" in a lowercase sans-serif font. A stylized circular arrow graphic is positioned between the two words, with a long, thin swoosh arching over the entire text.

STOVES - RENEWABLES - HEATING  
TEL 01579 345018  
7 PIKE ST, LISKEARD, PL14 3JE  
[WWW.STOVESHOP.CO.UK](http://WWW.STOVESHOP.CO.UK)



**AT&I** (South West)

**Portable Appliance Testing & Inspection**

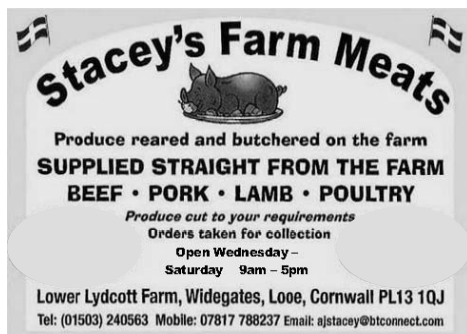
*Commercial • Industrial • Residential Homes  
Hotels • Guest Houses • B & B • Leisure  
Caravan Equipment*

**01752 851470**

*C & G Qualified Technicians  
Testing & Inspections comply with the  
IEE Codes of Practice  
[www.atisouthwest.co.uk](http://www.atisouthwest.co.uk)*



**K9 STYLE**  
**PET GROOMING**  
Jessica Tamblyn-Hayward  
Qualified Pet Groomer  
Bray Farm  
Bindown  
Nomansland, Near Looe  
01503 240841 or  
07834473835



**Stacey's Farm Meats**  
Produce reared and butchered on the farm  
**SUPPLIED STRAIGHT FROM THE FARM**  
**BEEF • PORK • LAMB • POULTRY**  
*Produce cut to your requirements  
Orders taken for collection  
Open Wednesday -  
Saturday 9am - 5pm*  
Lower Lydcott Farm, Widegates, Looe, Cornwall PL13 1QJ  
Tel: (01503) 240563 Mobile: 07817 788237 Email: [ajstacey@btconnect.com](mailto:ajstacey@btconnect.com)

## **PIANO TUITION**

**Beginners to Grade 8  
also, Music Theory  
Half hour lessons £ 10  
Hour lessons £ 20**

**HEATHER TAYLOR MA**

**01503 264474**

**[hstaylorofcraigmore@hotmail.com](mailto:hstaylorofcraigmore@hotmail.com)**



**Metherell Gard**  
Chartered Accountants and Registered Auditors

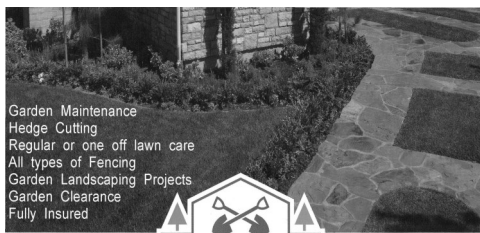
With over 80 years experience Metherell Gard offer confidential and up to date Accountancy and Taxation services specialising in small to medium-sized businesses and individuals. Whether you are a Sole Trader, Partnership, Limited Company, Club or Association we are client focussed and our range of services covers all aspects of accountancy from Business Start Up advice through to Tax Planning.

We pride ourselves in being reliable and approachable. As one of our valued clients, we will provide you with total commitment offering guidance and support to accompany our comprehensive range of services.

Metherell Gard, Morval, Looe, Cornwall, PL13 1PN

t:01503 240940 f: 01503 240950

e: [enquiries@metherellgard.co.uk](mailto:enquiries@metherellgard.co.uk)



Garden Maintenance  
Hedge Cutting  
Regular or one off lawn care  
All types of Fencing  
Garden Landscaping Projects  
Garden Clearance  
Fully Insured



DAVID PAGE.

Local to Looe with over 20 years of excellence in

Garden Maintenance & Landscaping.

For a free quote please call David on 01503 269027 or 07833096375

## A J P PROPERTY MAINTENANCE

TARMACING, DRAINAGE,  
DIGGERWORK, KERBING, STONEWALLING,  
FENCING, STEPS  
PAINTING, LANDSCAPING, PATIOS,  
PATHS, ALSO INSURANCE WORK

HOME 01503 240 125

WORK 07753 42 3962

EMAIL: [adrianprout@me.com](mailto:adrianprout@me.com)



**David Ellis BVSc. MRCVS**  
**Veterinary Surgeon**

**4c. Heathlands Road**  
**Liskeard**  
**PL14 4DH**

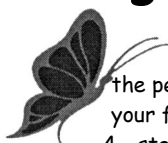
**Phone 01579 342 602**  
**Fax 01579 349568**

**Email: [davidellis@pensiiple.freemove.co.uk](mailto:davidellis@pensiiple.freemove.co.uk)**

**Surgery Hours:-**

**Mon-Fri**  
**9.00 - 10.00am &**  
**5.00 - 6.00pm**  
**Sat**  
**9.00 - 10.00am**

## Wringworthy Cottages



the perfect choice for when  
your family and friends visit  
4 - star cottages, open all year

[www.wringworthy.co.uk](http://www.wringworthy.co.uk) email: [holidays@wringworthy.co.uk](mailto:holidays@wringworthy.co.uk)

Wringworthy Cottages, Morval, Looe, Cornwall, PL13 1PR

tel. 01503 240685 fax. 01503 240830

resident owners: MICHAEL & KIM SPENCER

## MIKE KENSHOLE

### ELECTRICAL

**01503 240675**

**07778 524592**

**12 MORVIEW ROAD,**  
**WIDEGATES, LOOE,**  
**CORNWALL. PL13 1QE**

**[MIKE@KENSHOLEELECTRIC.CO.UK](mailto:MIKE@KENSHOLEELECTRIC.CO.UK)**  
**[WWW.KENSHOLEELECTRIC.CO.UK](http://WWW.KENSHOLEELECTRIC.CO.UK)**



APPROVED  
CONTRACTOR

All types of



DOMESTIC  
INSTALLER

Domestic & Commercial Work

Additional sockets & Lighting;  
PAT Testing;

Heating & Ventilation;

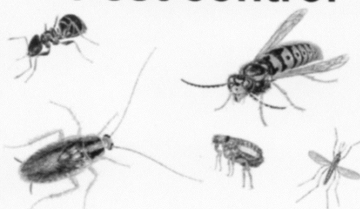
Landlord safety checks

Camping & Caravan Parks



[www.pestkilsouthwest.co.uk](http://www.pestkilsouthwest.co.uk)

## Pest control



**PROFESSIONAL CONTROL**  
**OF PESTS - No call out fee**

**07896595110**

**01579320915**

BOLVENTOR LAUNCESTON CORNWALL



## ***DOWN-ENDE HOUSE***

Exclusive Dining Venue – AA Four Star B&B Accommodation

We are delighted to specialize in smaller functions catering for a range of events including:

- Family celebrations
- Birthdays and Wakes
- Working lunches
- Anniversaries, Christenings
- Business breakfast meetings
- Bookings for Christmas now being taken

Special diet catered for \* Wheelchair accessible \* Car park with off road parking

Our conservatory dining room extends our present dining room and can be used for private dining for parties. We will be delighted to handle all arrangements, compose menus and suggest wines to make your occasion special.

- Each event tailored to your needs personally organized
- Excellent local produce prepared in house
- With an emphasis on friendly service and superb value for money

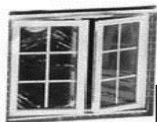
Widegates, Nr Looe, Cornwall, PL13 1QN – Tel 01503 240 213  
[www.downende.com](http://www.downende.com)



# **SOLARTEC**

## **Windows & Conservatories Ltd**

**'A' Rated WINDOWS & DOORS  
at BEST PRICES EVER!**



FENSA  
REGISTERED

Professionally fitted and finished by us with a  
**10 year ins. guarantee.**  
In all colours

**NEW**

### **FACTORY SHOP SUPPLY ONLY**

For all your windows, doors, conservatories,  
fascia, trims, guttering and sealants  
**7-10 DAY TURN AROUND ON WINDOWS,  
DOORS and CONSERVATORIES**

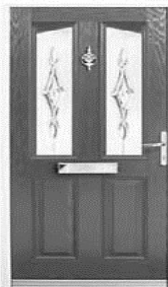
**TEL: 01579 343425**

**FAX: 01579 344500**

WEBSITE: [www.solartecwindows.co.uk](http://www.solartecwindows.co.uk)

EMAIL: [sales@solartecwindows.co.uk](mailto:sales@solartecwindows.co.uk)

**KEEPING JOBS IN CORNWALL**



# moore electrical

01503 240298



mooreelectricallooe.co.uk

- Domestic Installations
- Commercial and Agricultural
- Industrial
- Repairs and Rewires
- Portable Appliance Testing
- Electrical Condition Reports
- Fire Alarms and Emergency Lighting
- All work guaranteed and certificated
- Serving the Community since 1990

Tel. 01503 240298  
Mobile: 07881 940068

Menhay, Morval, Looe, Cornwall PL13 1PR



## Pine Lodge

HOME CARE



*'Making the time to care'*

We provide a wide range of home care services.  
Whilst giving assistance with all aspects of  
personal care we are committed to achieving  
and maintaining independence.

Telephone: **01503 272016**

Email: **homecare@orchardcare.co.uk**

Website: **www.orchardcare.co.uk**

Pine Lodge Home Care, Restgarth Care Home,  
Langreek Lane, Polperro, Looe, Cornwall PL13 2PW

